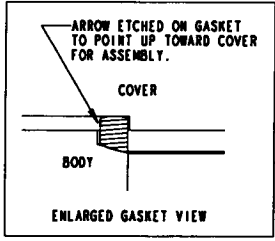


THIS DOCUMENT MAY CONTAIN INFORMATION AFFECTING THE NATIONAL DEFENSE OF THE UNITED STATES WITHIN THE MEANING OF THE ESPIONAGE ACT, OR MAY REPRESENT A PROPRIETARY ARTICLE TO WHICH SNAP-TITE, INC. RETAINS THE EXCLUSIVE RIGHT OF MANUFACTURE AND SALE. THIS DOCUMENT IS DISCLOSED IN CONFIDENCE, AND ITS POSSESSION DOES NOT CONVEY PERMISSION TO MANUFACTURE THE ARTICLE DEPICTED HEREIN. SUCH PERMISSION MAY BE GRANTED ONLY BY SPECIFIC AUTHORIZATION IN WRITING, SIGNED BY AN OFFICER OF SNAP-TITE, INC.

REVISED		REV. 3	SH 1 OF 3	APP
REVISION		BY:MEJ	DATE: 5/3/07	JLT
1	P/N 20SM4072-GYOM WAS 20SM4082-GYPM	BY:MEJ	DATE: 5/10/07	JLT
2	P/N 20SM4072-OMGY WAS 20SM4082-GYOM	BY:MEJ	DATE: 6/7/07	JLT
3	ADDED NB NUMBERS			

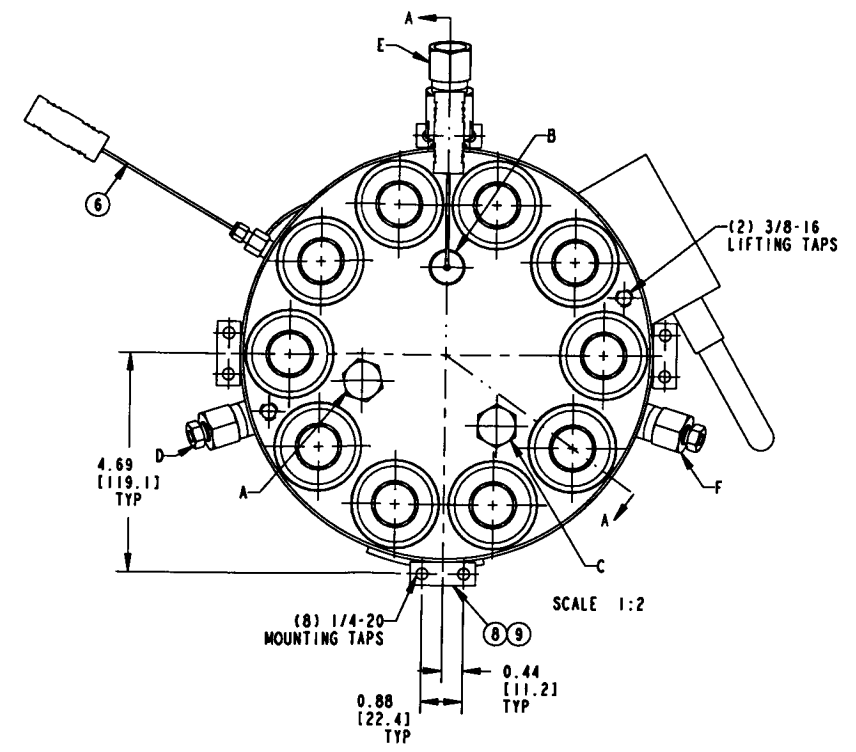
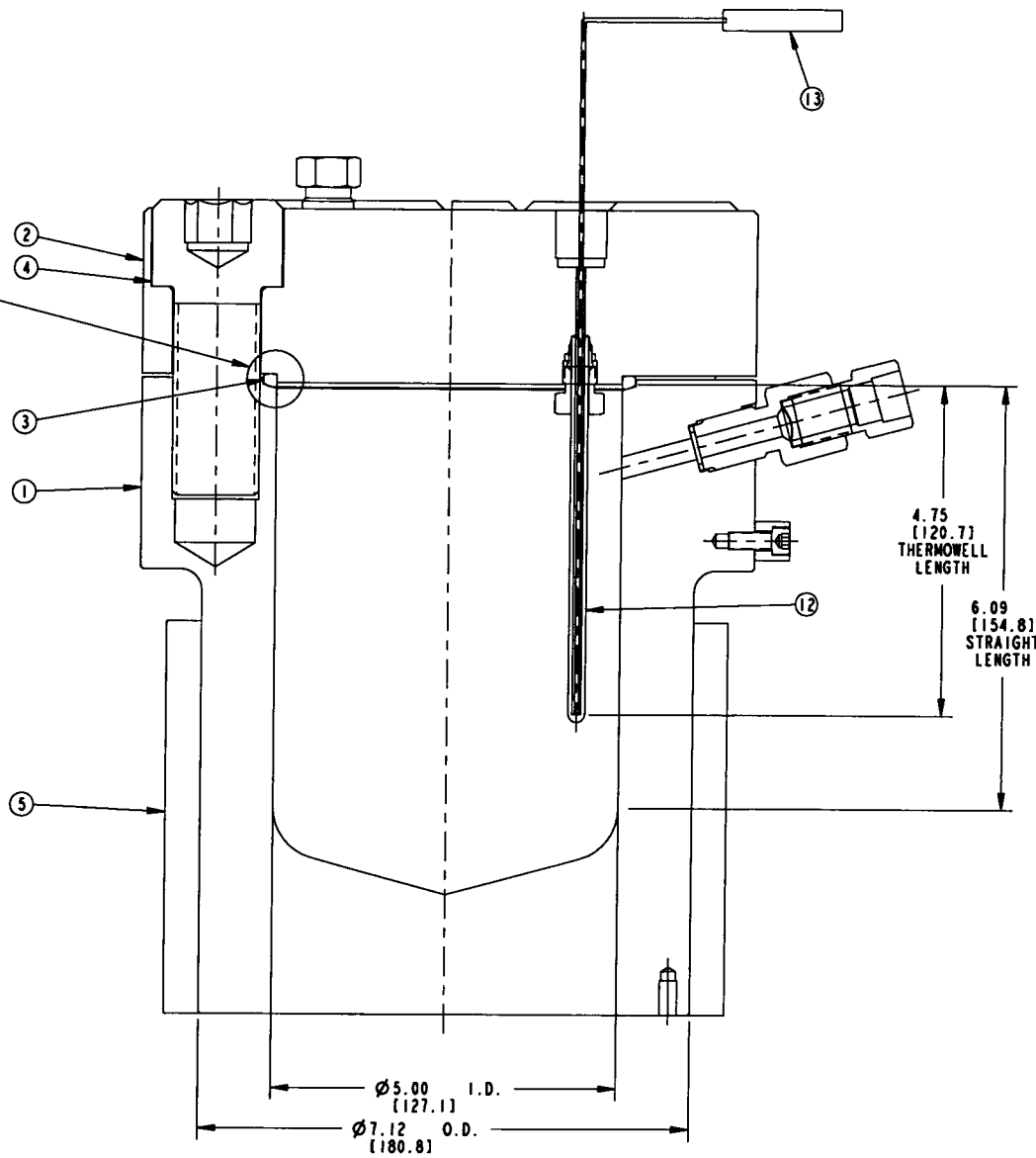
VESSEL OPENING LEGEND				
CT= COVER TOP, O= OUTSIDE CONNECTION, I= INSIDE CONNECTION, BF= BODY FLANGE				
OPENING	LOC	CONNECTION DESCRIPTION	USE	ITEMS REQUIRED
A	CT	O= F750FB I=	PROCESS (PLUGGED)	O= 24,25 I=
B	CT	O= F750FB I= SW250	THERMOWELL	O= 12,13,14,15 I=
C	CT	O= F750FB I=	PROCESS (PLUGGED)	O= 24,25 I=
D	BF	O= F750FB TO SF250CX I=	GAS INLET	O= 19,21 I=
E	BF	O= F750FB I=	SAFETY HEAD	O= 16,17 I=
F	BF	O= F750FB TO SF250CX I=	VENT	O= 19,21 I=



BODY STAMPING:

NB 195, 196

U CERTIFIED BY: AUTOCLAVE ENGINEERS
 MAWP: 5,000 PSI AT 932°F
 MDMT: -20°F AT 5,000 PSI
 S/N: 07250175-1,-2
 YEAR 2007



ITEM NO.	QTY.	PART NO.	DESCRIPTION	MATERIAL	SPARE
1	1	301B-2011	BODY	SA-182 F316	
2	1	301B-2012	COVER	SA-185 F316	
3	1	1010-7176	SEAL	316 SS	X
4	10	P-1096	SOC HD CAP SCREW, 1/4-12 X 3.00 LG	SA-193 GR B16	
5	1	62341	BAND HEATER, 240V 2000W	CERAMIC	
6	1	101D-0147	THERMOCOUPLE (TYPE K)	316 SS SHEATH	X
7	1	301B-1861	HEAVY DUTY FLOOR STAND ASSY	C-STL	
8	4	101D-0493	COVER/BODY HOLDER	316 SS	
9	4	HS025NC0062ST	SOC HD CAP SCREW, 1/4-20 X 0.62 LG	18-8 SS	
10	1	201C-2922	VALVE/GAUGE SUPPORT	ALUMINUM	
11	2	1010-0680	VALVE BRACKET	C-STL	
12	1	TW025125SS0544	THERMOWELL 0.25 OD X 0.125 ID	316 SS	
13	1	WTCSK06012	THERMOCOUPLE (TYPE K)	316 SS SHEATH	X
14	1	SMN40-316	GLAND	316 SS	
15	1	SSL40	SLEEVE	316 SS	
16	1	1010-7907	1/2F SAFETY HEAD ASSEMBLY	316 SS	
17	1	60911	1/2F RUPTURE DISK 4782-5000 PSI @ 72 F	INCONEL	X
18	4	P-10030	STD T-NUT, 1/4-20	STEEL	
19	2	15M124E6	ADAPTER, W750FB TO SF250CX	316 SS	X
20	1	P-10053	2.50 DIA PRESSURE GAUGE 0-7500 PSI	316 SS BOURDON TUBE	
21	2	20SM4072-OMGY	AIR OP VALVE ASSY, 1/4 ANGLE	316 SS	
22	1	K-0122	TRANSDUCER, 0-10000 PSIG	17-4PH SS	X
23	1	A205C-3989	GAUGE/ TRANSDUCER TEE	316 SS	
24	2	1010-6433	PLUG	316 SS	X
25	2	P-0426SS	GASKET	316 SS	X
26	2	FLOOR STOCK	SCREW, HEX HD CAP, 1/4-20 X 1.00 LG	STEEL	
27	4	FLOOR STOCK	FLAT WASHER, #10	PLATED STEEL	
28	4	FLOOR STOCK	HEX NUT, #10-24	STEEL	
29	4	FLOOR STOCK	RD HD MACH SCREW, #10-24 X 1.25 LG	PLATED STEEL	
30	2	FLOOR STOCK	SCREW, HEX HD CAP, 1/4-20 X 0.50 LG	STEEL	
31	4	FLOOR STOCK	SPRING LOCKWASHER, #10, REGULAR	PLATED STEEL	
32	4	FLOOR STOCK	SPRING LOCKWASHER, 1/4, REGULAR	PLATED STEEL	
33	2	MS15-092	TUBING 0.25 OD X 0.109 ID X QTY FT	316 SS	
34	1	301B-2013	INSULATION CAP	TEFLON/FIBERGLASS	

VESSEL RATINGS:
 MAXIMUM ALLOWABLE WORKING PRESSURE: 5000 psig AT 932° F (344 barg AT 500° C)
 MINIMUM DESIGN METAL TEMPERATURE: -20° F AT 5000 psig (-29° C AT 344 barg)
 HYDROSTATIC TEST PRESSURE: 8500 psig AT ROOM TEMP (586 barg)
 RATED PER ASME CODE SECTION VIII DIVISION 1

OPERATING/INSTALLATION SPECIFICATIONS:
 -CAP SCREW (ITEM 4) TORQUE: MINIMUM AT MAWP: 240 (f-lbs (325 N-m) MAXIMUM PERMITTED: 270 (f-lbs (366 N-m))
 -LUBRICATE EXTERNAL (NON-PROCESS WETTED) THREADS WITH A HIGH QUALITY ANTI-SIEZE COMPOUND SUITABLE FOR THE OPERATING TEMPERATURE.
 -TEMPERATURE RANGE FOR GRAPHITE YARN PACKING IN AUTOCLAVE ENGINEERS VALVES: 0 TO 800° F (-18 TO 427° C)

ADDITIONAL USER RESPONSIBILITIES
 CAUTION
 -READ AND UNDERSTAND ALL OPERATING, MAINTENANCE AND SAFETY INSTRUCTIONS PRIOR TO INSTALLING AND OPERATING THE UNIT
 -VERIFY COMPATIBILITY OF SUPPLIED MATERIAL WITH PROCESS FLUIDS, REFER TO PARTS LIST
 -DO NOT EXCEED 90% OF RUPTURE DISK (ITEM 17) RATING
 -DO NOT EXCEED 75% OF THE PRESSURE GAUGE (ITEM 20) RATING
 -SENSITIZATION OCCURS OVER THE TEMPERATURE RANGE 850 TO 1474° F. (454 TO 801° C) THIS IS A HARMFUL GRAIN BOUNDARY CONDITION THAT MAY AFFECT CORROSION RESISTANCE OF AUSTENITIC ALLOYS.
 -VERIFY RELIEF DEVICE CAPACITY RELATIVE TO PROCESS CONDITIONS AND OPERATING PARAMETERS WHICH MAY GENERATE EXCESSIVE PRESSURE (SUCH AS FROM AN EXTERNAL PRESSURIZATION SOURCE, CHEMICAL REACTION, EXCESSIVE HEAT INPUT ETC.)
 -PROVIDE OVER PRESSURE PROTECTION FOR THE PRESSURE VESSEL
 -VERIFY SELECTION OF PIPE THREAD SEALANT FOR COMPATIBILITY WITH PRESSURE, TEMPERATURE, AND/OR PROCESS FLUID

- X = RECOMMENDED SPARE PART. CONSULT FACTORY FOR PRICING AND DELIVERY INFORMATION. PHONE: (814) 860-5700

P/N: 401C-0458 REF PART: 40C-0343

MATERIAL: 316 SS

P/S: NONE DWN: MEJ 4/3/07

CHK: BG APP: JLT

DO NOT SCALE DRAWING

Autoclave Engineers
 A division of Snap-tite, Inc., Erie, Pennsylvania, U.S.A.
 2000ML BOLTED CLOSURE PRESSURE VESSEL

SIZE: D/EWO: 06-07250175 DWG. NO.: 40C-0458 REV:3

SCALE: 3:4 H4-1 CODE: 78357 SHEET: 1 OF 2

INCHES (millimeters)