

Transaction Information

Tool ID	TRK421
Tool Status	Running Wafers
Location	Dresden, Germany
Wafer Size	300 mm
Fab Section	Lithography
Tool Available Date	2025-02-01

General Product Information

Vendor Supplier	TEL
Model	LITHIUS
Vintage	2005
Serial No	MD-G360588
Asset Description	2-Block-Machine
Software Version	300.0.130.2
CIM	SECS
Process	Coat, Development

Hardware Configuration (Fab)

System Type	Description	Quantity	Status
Main System	Lithius 2-Block	1	OK
Handler System	TEL robot (CRA/PRA_3x/IRAM/IRAS)		OK
Factory Interface	FOUP	5	OK
Others			
Options System			

Hardware Configuration (Subfab / Auxilliary Units)

Description	Quantity	Status
Coater Cabinet	1	OK
Temp./ Hum.Controller	2	OK
Resist Cabinet	1	OK
Developer Cabinet	1	OK
PowerBox	1	OK

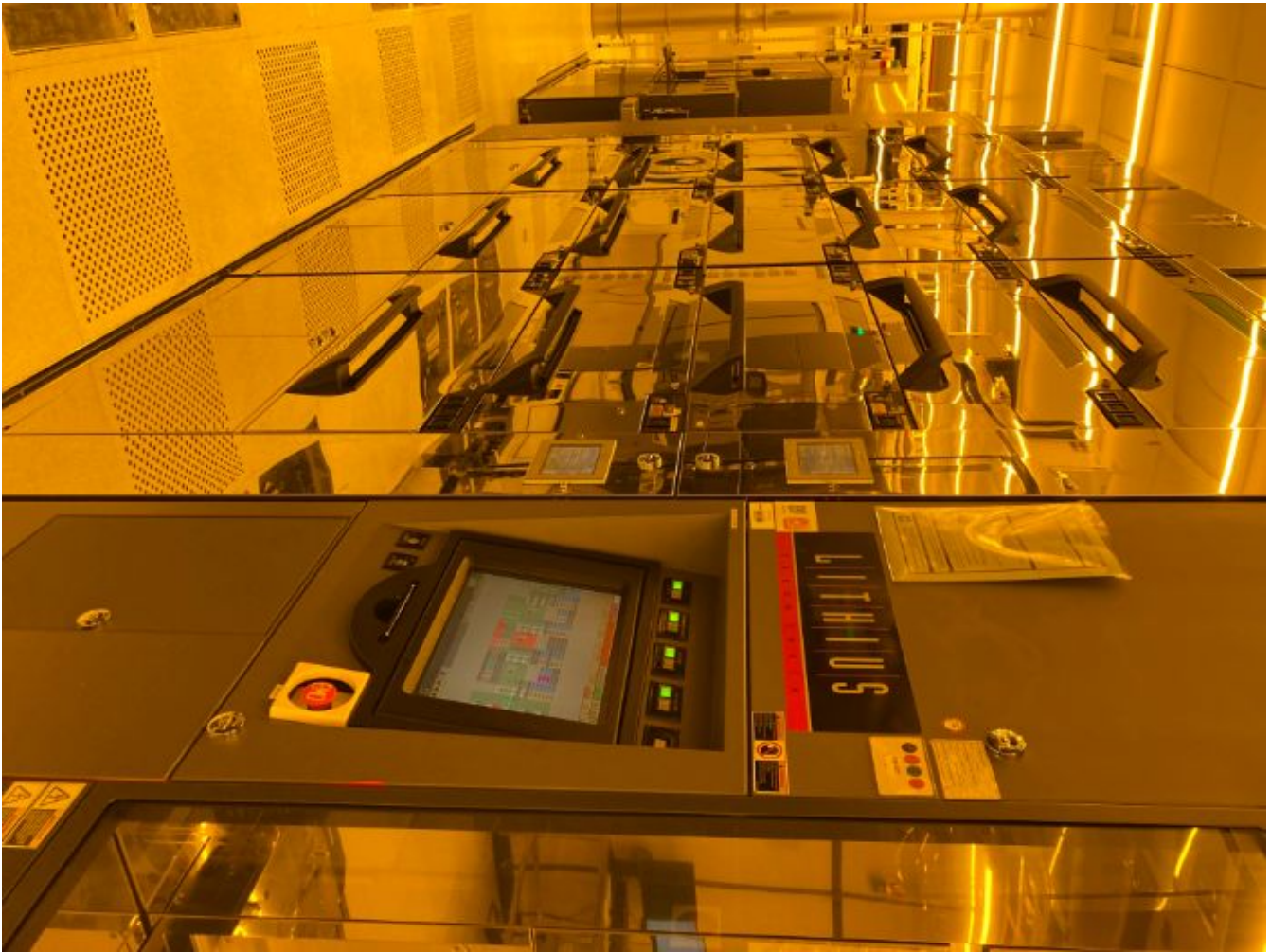
Missing/Faulty Parts / Accesories List

Description	Quantity
NONE	

Tool Pictures

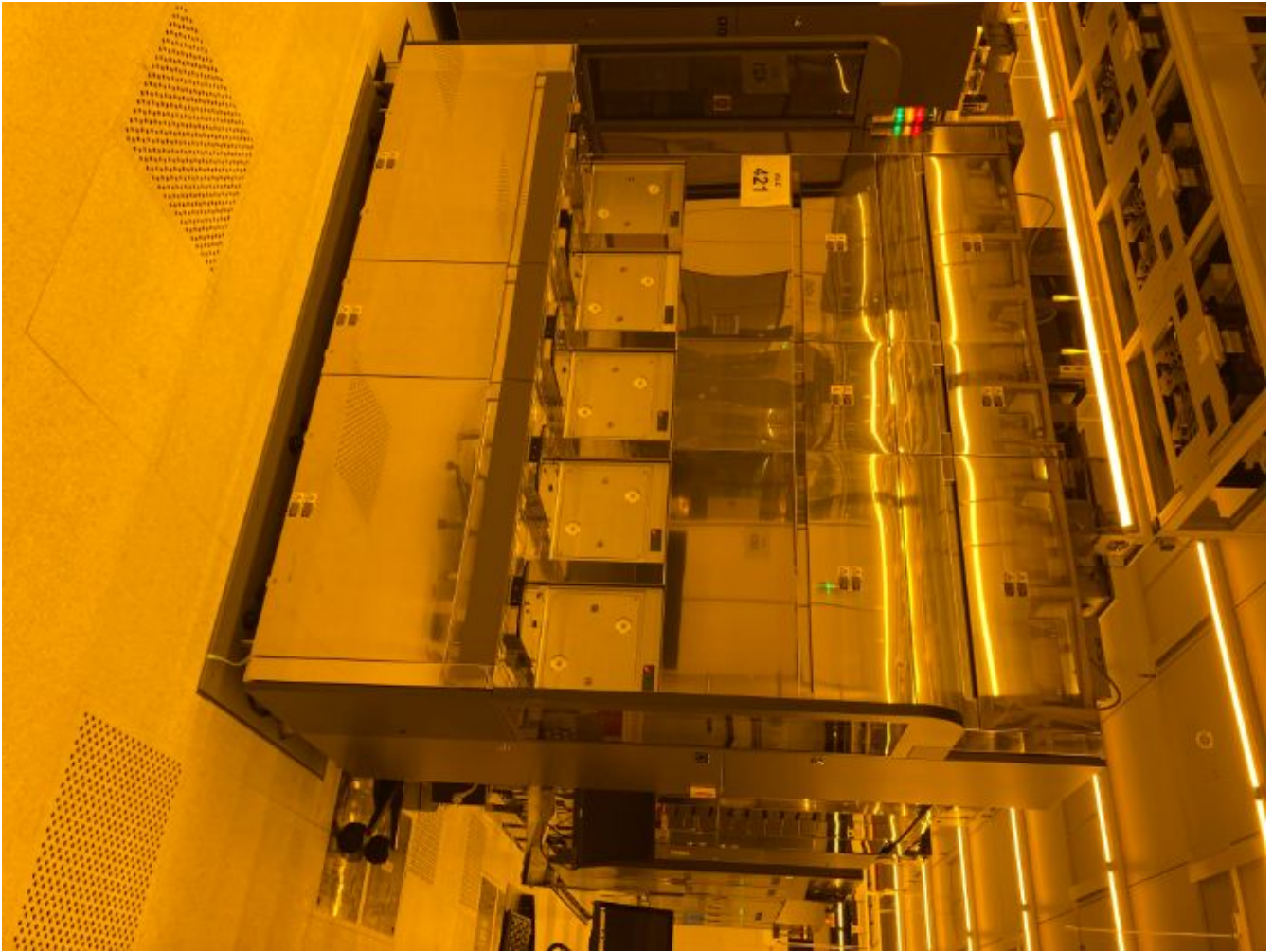
General

Track_mainlevel



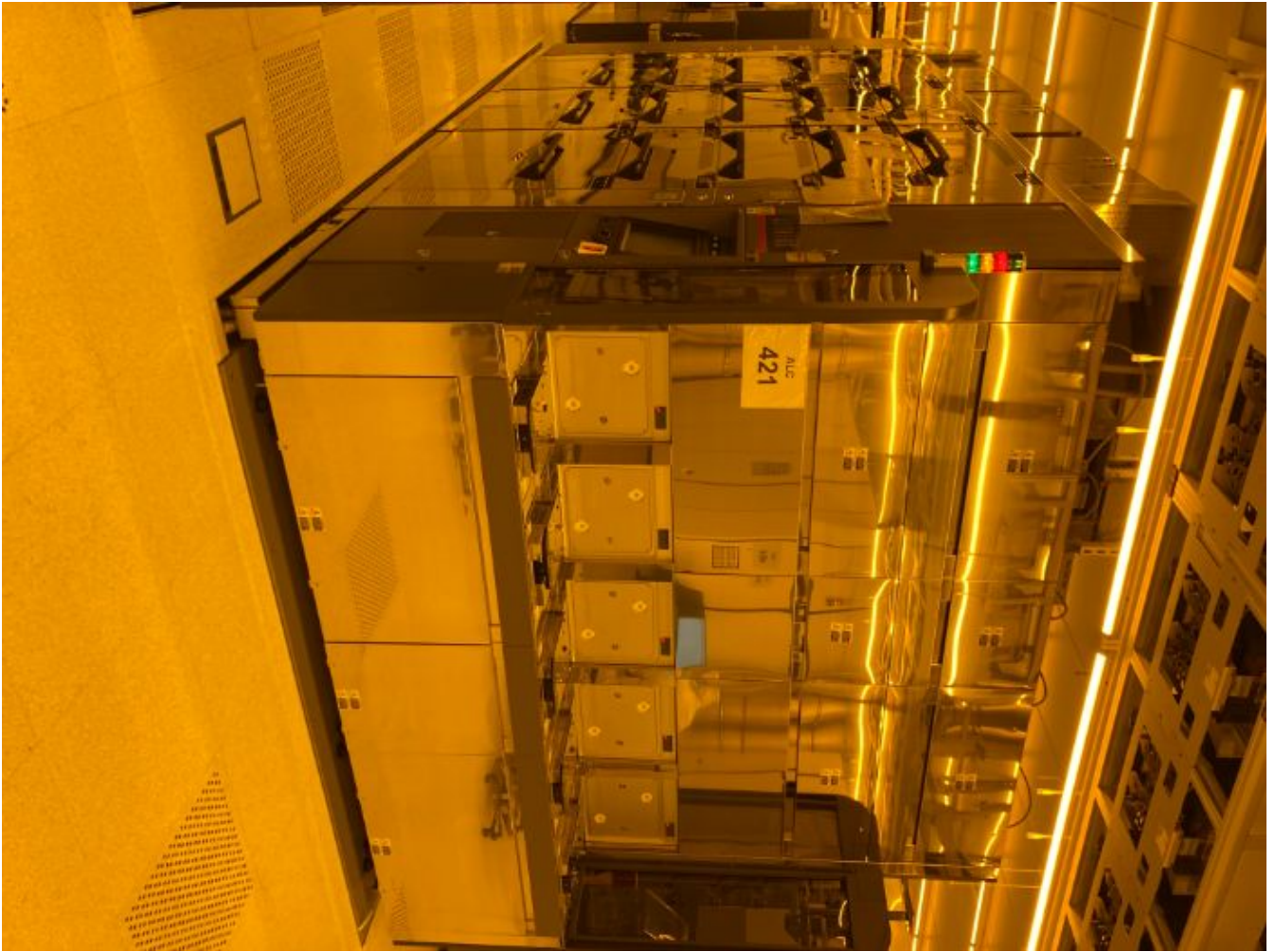
General

Track_mainlevel



General

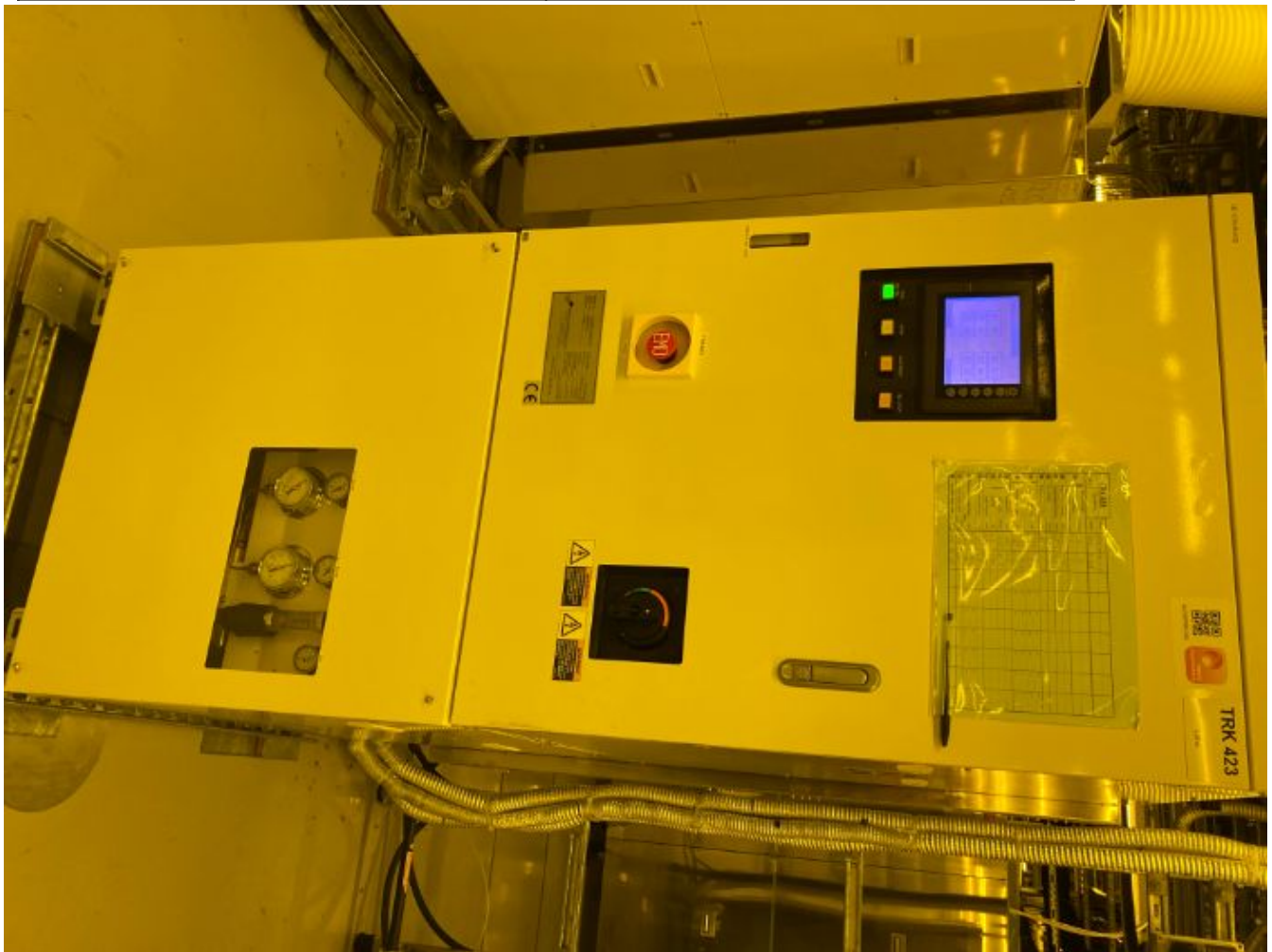
Track_mainlevel

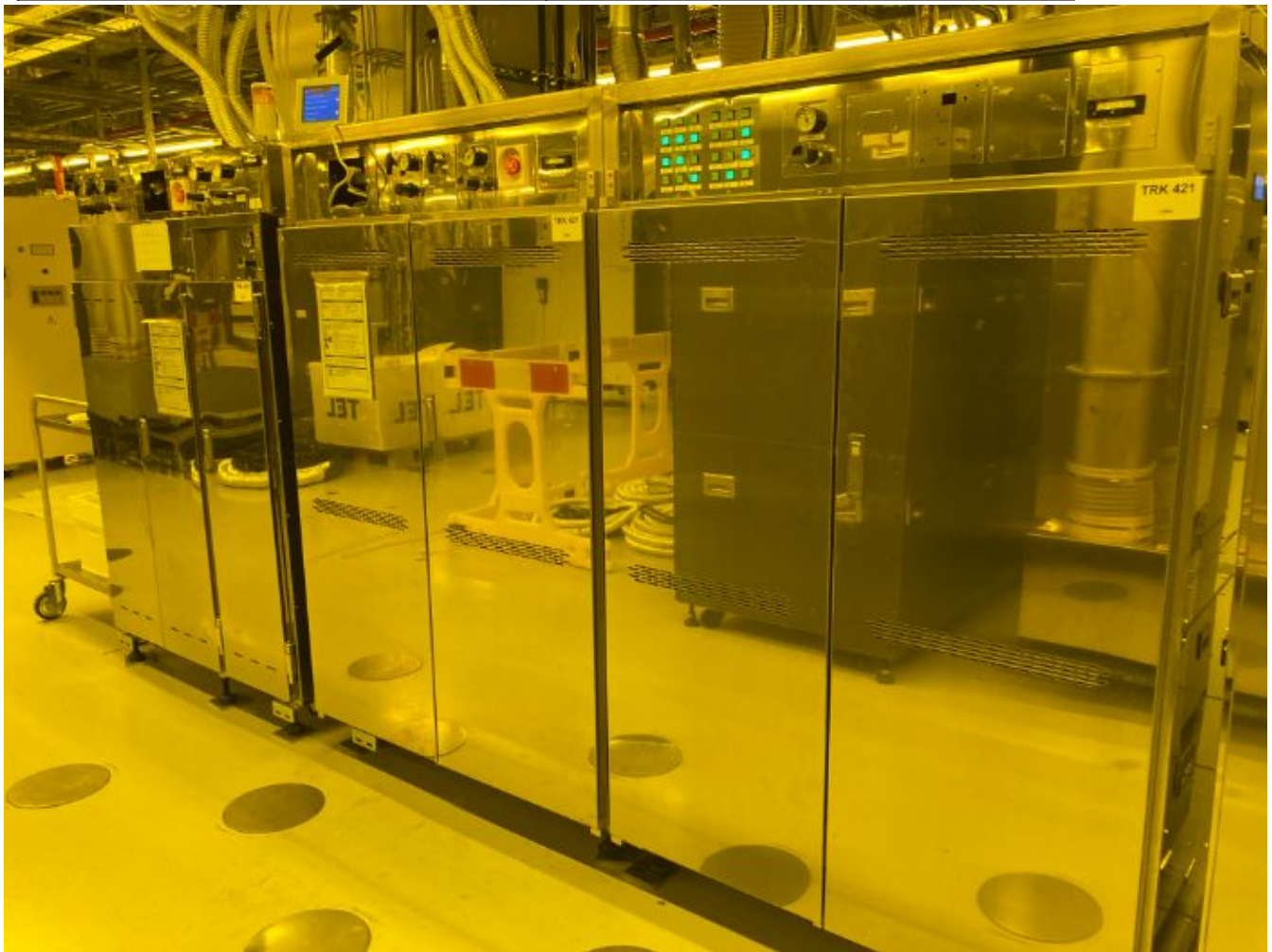




Hardware Sub-fab

HW_sublevel





Hardware Sub-fab

HW_sublevel



Hardware Sub-fab

HW_sublevel





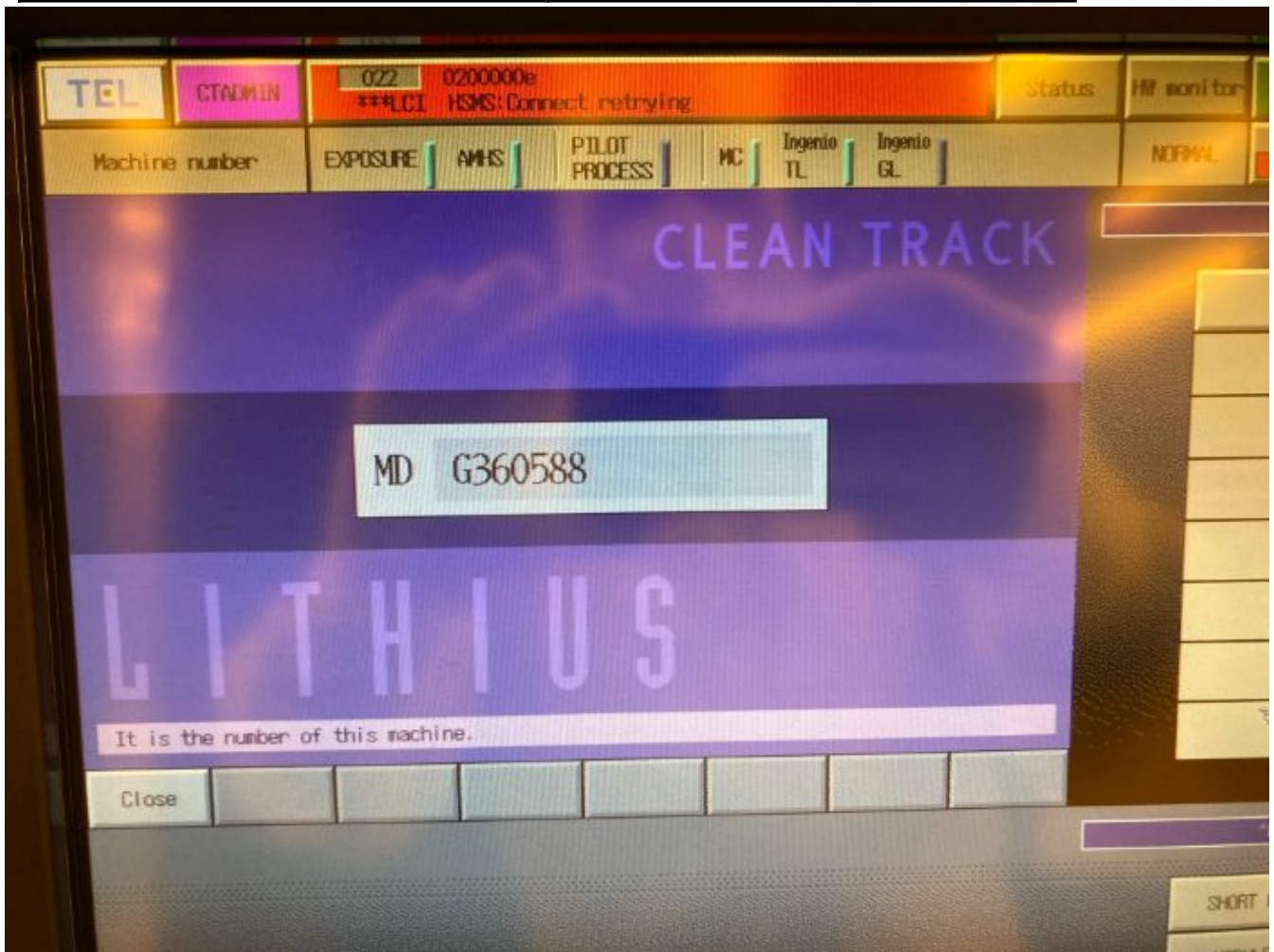
Manufacture Serial

number_plate



Manufacture Serial

number_plate



Additional Tool Data Files