

Transaction Information

Tool ID	TRK422
Tool Status	Running Wafers
Location	Dresden, Germany
Wafer Size	300 mm
Fab Section	Lithography
Tool Available Date	2025-02-01

General Product Information

Vendor Supplier	TEL
Model	LITHIUS
Vintage	2006
Serial No	MD-G360844
Asset Description	2-Block-Machine
Software Version	300.0.130.2
CIM	SECS
Process	Coat, Development

Hardware Configuration (Fab)

System Type	Description	Quantity	Status
Main System	Lithius 2-Block	1	OK
Handler System	TEL robot (CRA/PRA_3x/IRAM/IRAS)		OK
Factory Interface	FOUP	5	OK
Options System			
Others			

Hardware Configuration (Subfab / Auxilliary Units)

Description	Quantity	Status
Developer Cabinet	1	
PowerBox	1	
Coater Cabinet	1	
Resist Cabinet	1	
Temp./ Hum.Controller	2	

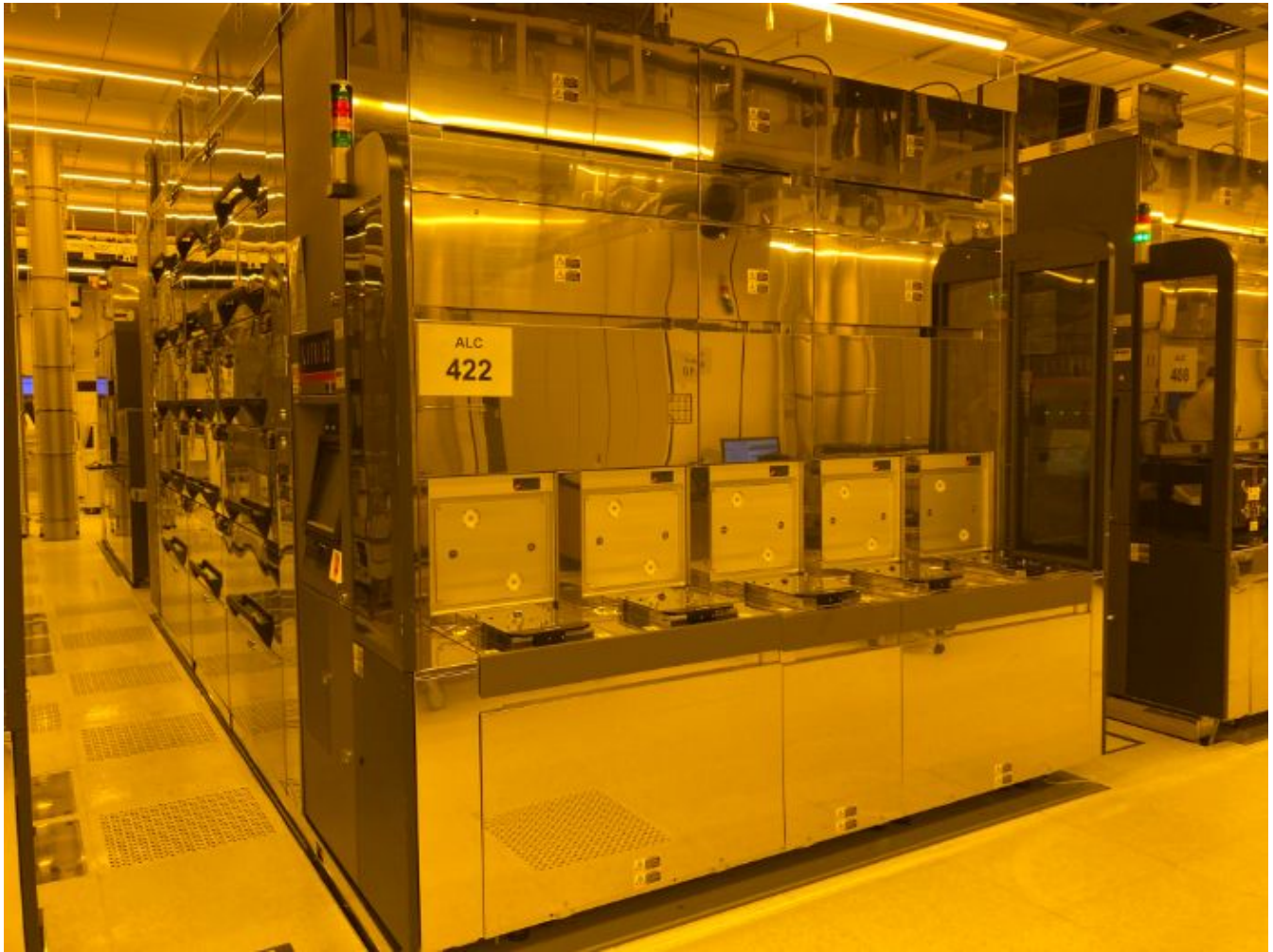
Missing/Faulty Parts / Accesories List

Description	Quantity

Tool Pictures

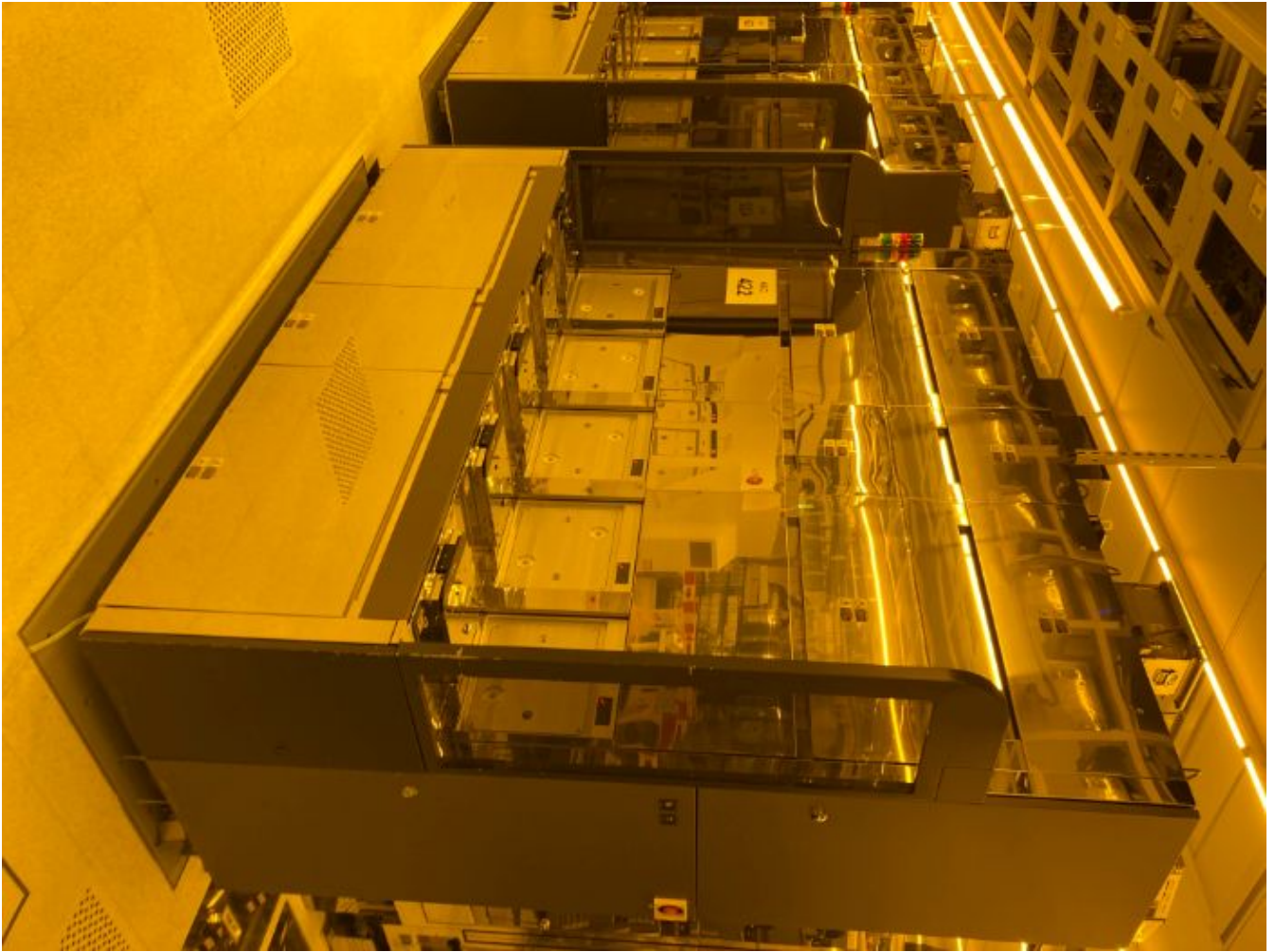
General

Track_mainlevel



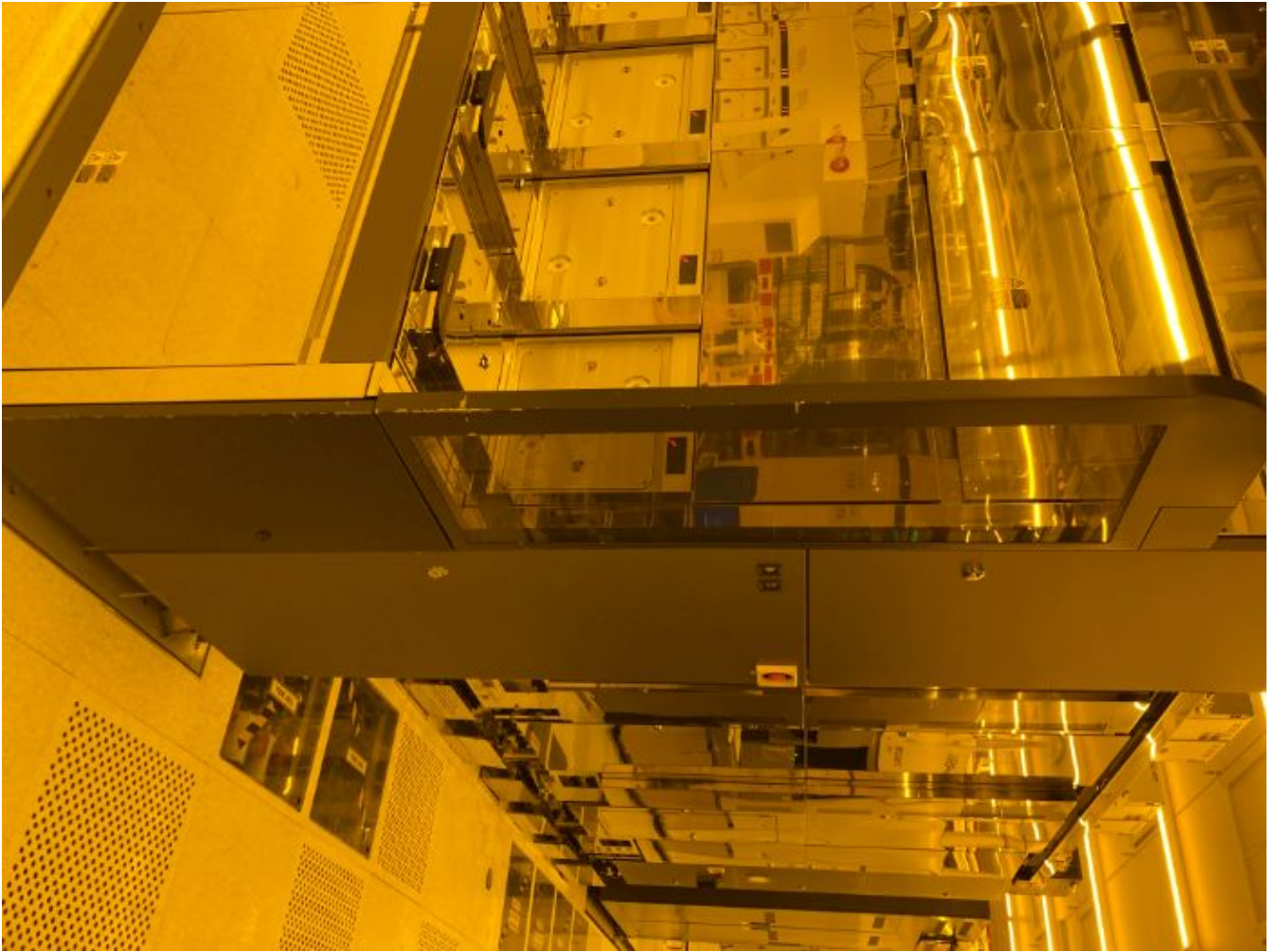
General

Track_mainlevel



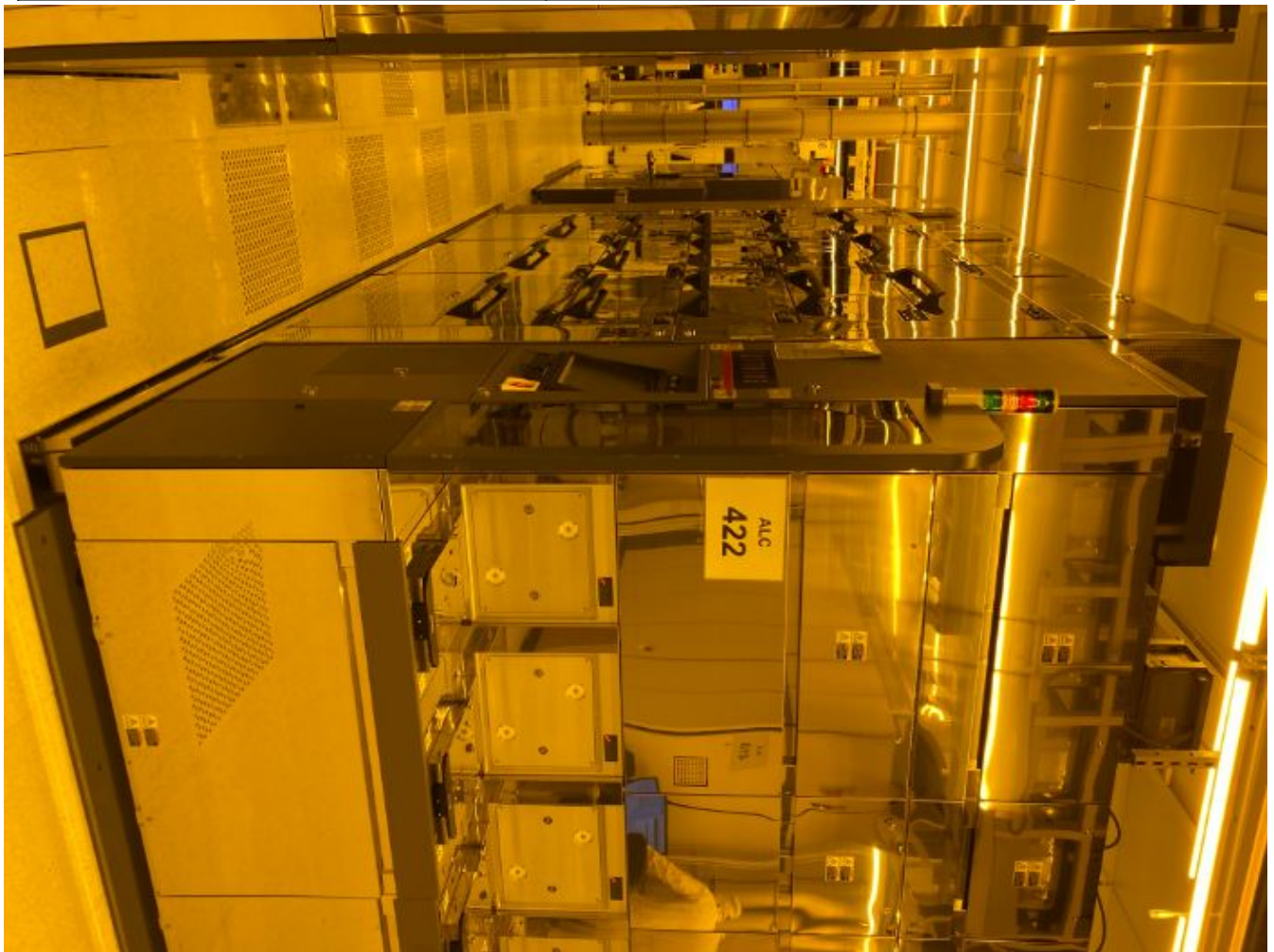
General

Track_mainlevel

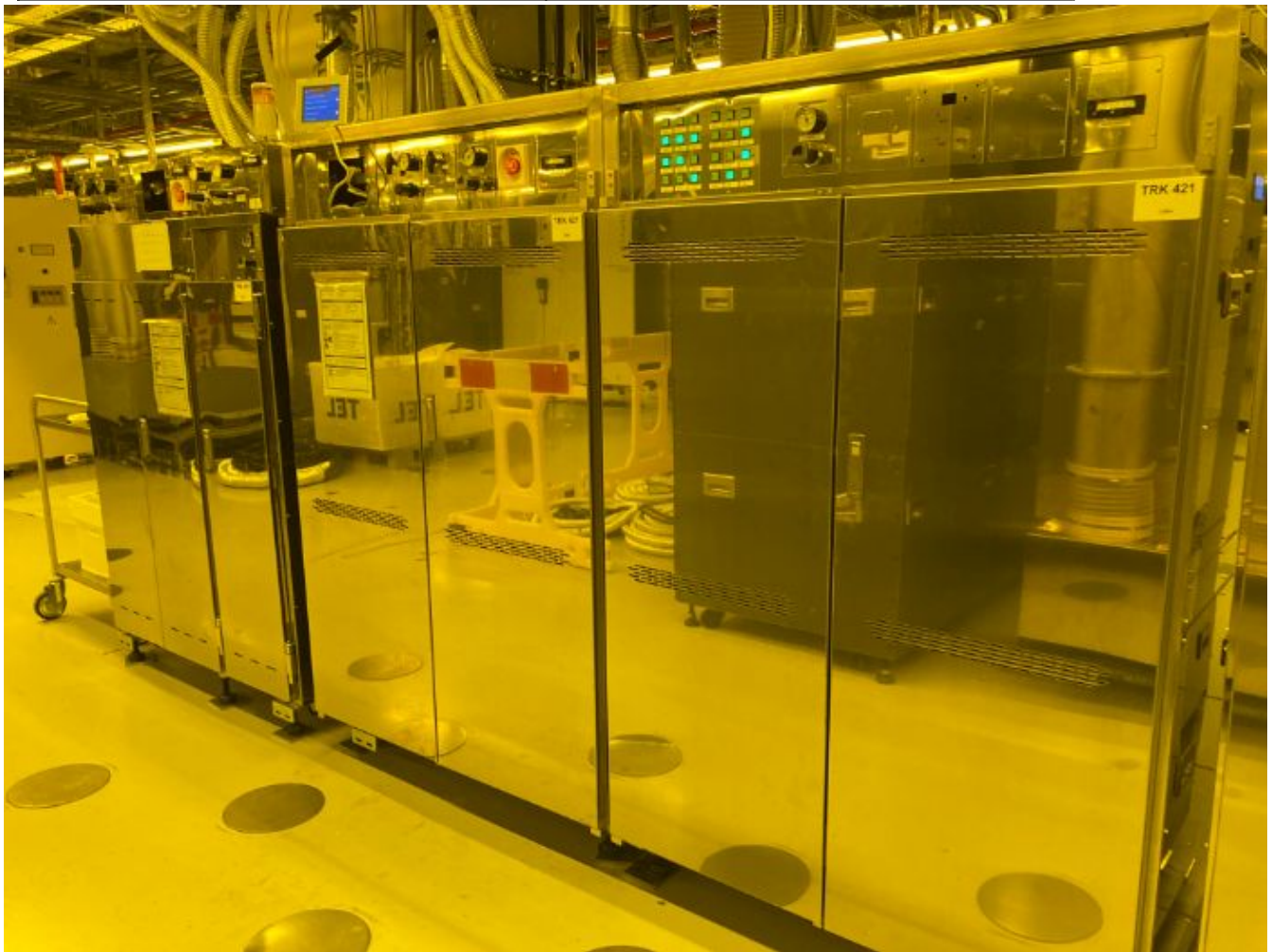


General

Track_mainlevel









Hardware Sub-fab

HW_sublevel





Hardware Sub-fab

HW_sublevel



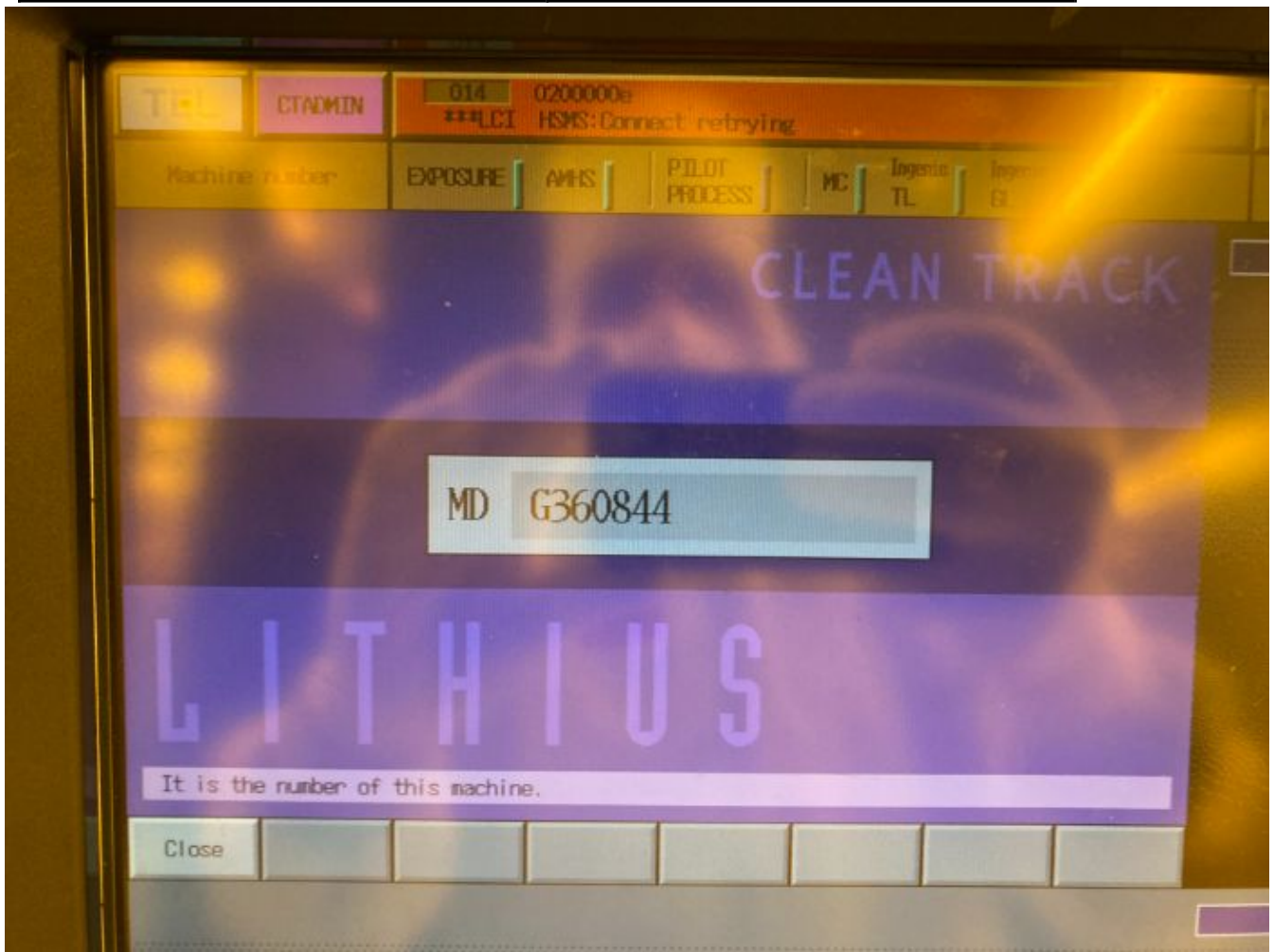
Manufacture Serial

number_plate



Manufacture Serial

number_plate



Additional Tool Data Files