

Transaction Information

| | |
|---------------------|------------|
| Tool ID | CVD2853 |
| Tool Status | Connected |
| Location | Malta, USA |
| Wafer Size | 300 mm |
| Fab Section | Thin Film |
| Tool Available Date | 2021-01-13 |

General Product Information

| | |
|-------------------|---|
| Vendor Supplier | AMAT |
| Model | PECVD Producer GT BDII ---- 3ch - CHA-BCHD, CHB-BCHD, CHC-BCHD |
| Vintage | 2014 |
| Serial No | 428039 |
| Asset Description | CVD85x, underutilized at FAB8, used for old techs |
| Software Version | B4361_gB8.00_24 |
| CIM | SECS/GEM |
| Process | TFM_U-LowK Dielectric |

Hardware Configuration (Fab)

| System Type | Description | Quantity | Status |
|-------------------|----------------------------------|----------|--------|
| Main System | Producer GT PECVD, 3CHM BCHD | 1 | OK |
| Factory Interface | NONE | | |
| Others | | | |
| Handler System | Standard Automation and Software | 1 | OK |
| Options System | | | |

Hardware Configuration (Subfab / Auxilliary Units)

| Description | Quantity | Status |
|-------------|----------|--------|
| NONE | | |

Missing/Faulty Parts / Accesories List

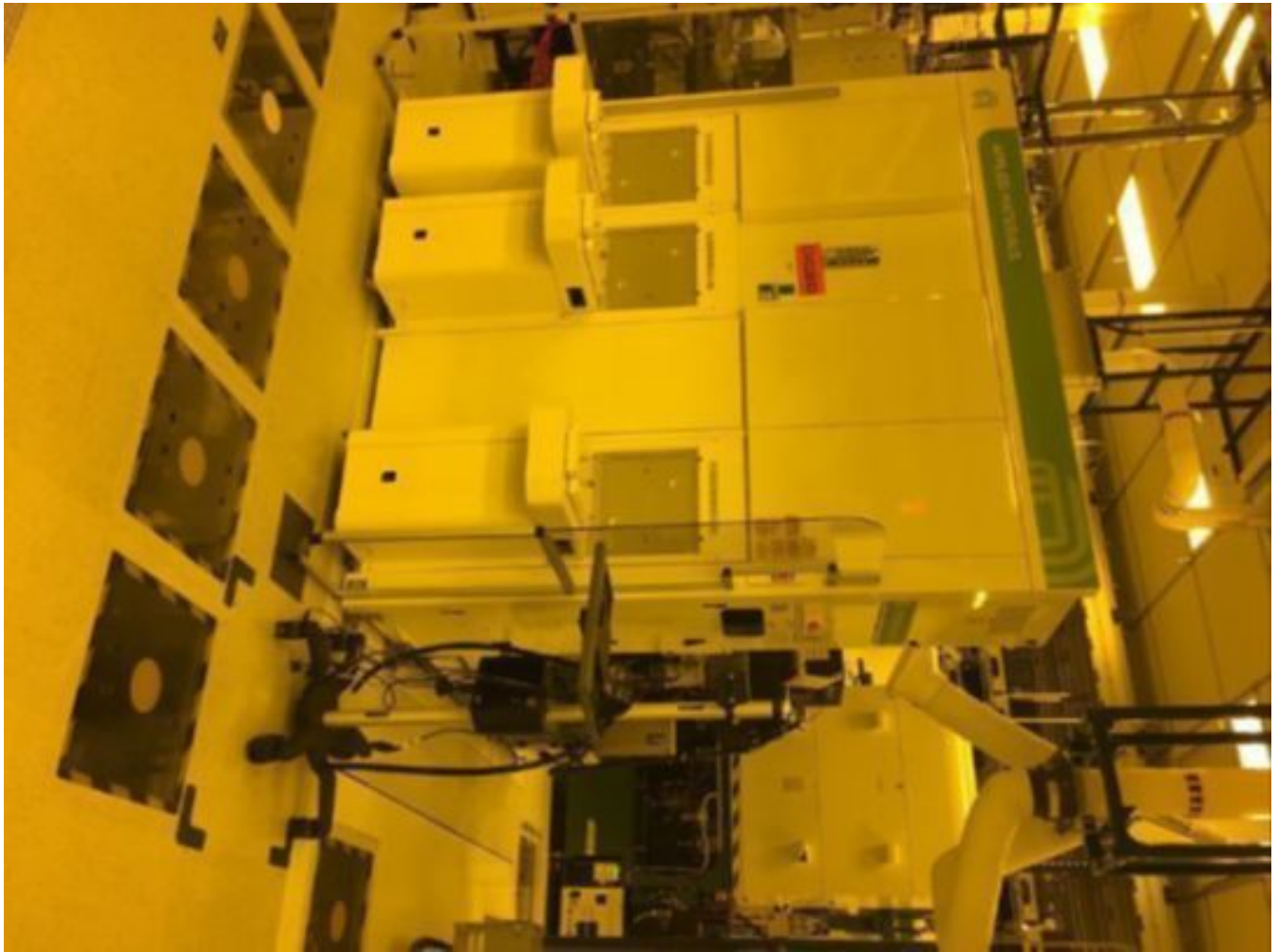
| Description | Quantity |
|--|----------|
| A - Heaters missing | |
| MF - MF AC panel open and missing components (jumpers, drivers, ect) | 1 |
| A - Manometers and tree missing | |
| B - manometers | |
| B - Rf generator | |
| MF - LL heaters missing | 1 |
| MF - Foreline for buffer and LL missing | 1 |
| FI - Door interlocks are removed | 1 |
| A - All cards missing | |
| FI - KVM and | 1 |

| Description | Quantity |
|---|----------|
| monitor missing | |
| MF - LCF sensors missing | 1 |
| MF - Buffer robot upper blades missing | |
| MF - Gold box missing (robot control) | 1 |
| B - Lid stack components missing | |
| C - Lid covers | |
| A - Rps by pass valve missing | |
| FI - FFU pid controller missing along with various components in tray | 1 |
| A - Lid harness missing for gas box heaters | |
| B - RF gen and heater ac junction box side 1 | |
| MF - Mf and LL purge weldments and valves missing | 1 |
| C - Entire card cage | |
| MF - MF I/O controller missing | 1 |
| C - Ac box pulled half way out. Assume bad | |
| C - Rps by pass missing | |
| FI - FI ATM doors and actuators missing | 1 |
| FI - Macronode appears tampered with (0190-22543) | 1 |
| FI - 2 /3 LP | 1 |

| Description | Quantity |
|---|----------|
| missing EV block and communication boards | |
| B - entire card cage | |
| C - GPLIS and other gas panel components (valves and harness) | |
| A - AC box missing (possible cables as well) | |
| MF - LL lifts and sensors missing / tampered with | 1 |
| C - Rf generators | |
| C - Pin and heater Lift harness | |
| B - Rps missing | |
| MF - EV manifold missing | 1 |
| FI - Both robots and controller missing | 1 |
| FI - All servers are missing (FI, FE, TCS) | 1 |
| B - heater lifts missing studs and harness appears tampered with | |
| B - GPLIS and gas panel components like LFM | |
| A - GP apart and harnesses missing along with all MFC dnet cables | |

Tool Pictures

| | |
|---------|----------------------|
| General | MF and Serial Number |
|---------|----------------------|







No: 14195-1694



Part No: 428039A

PRODUCER GT CONFIGURED 
300MM CHAMBER



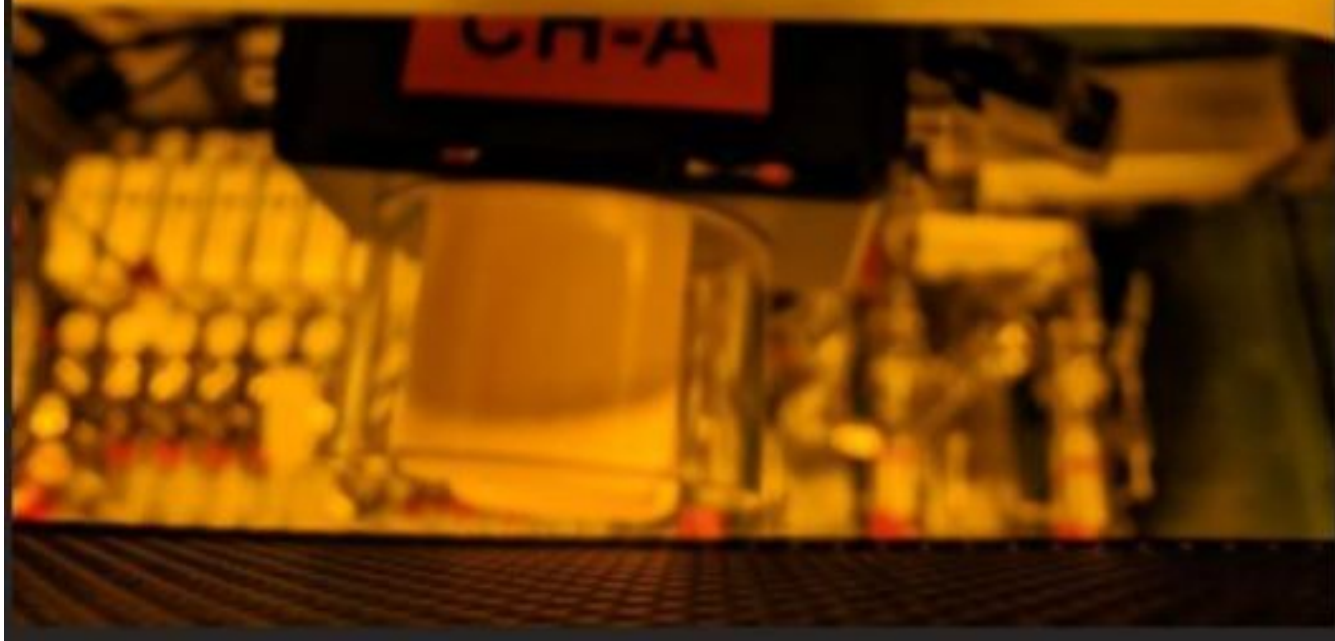
Sys # : 428039

Rev:002

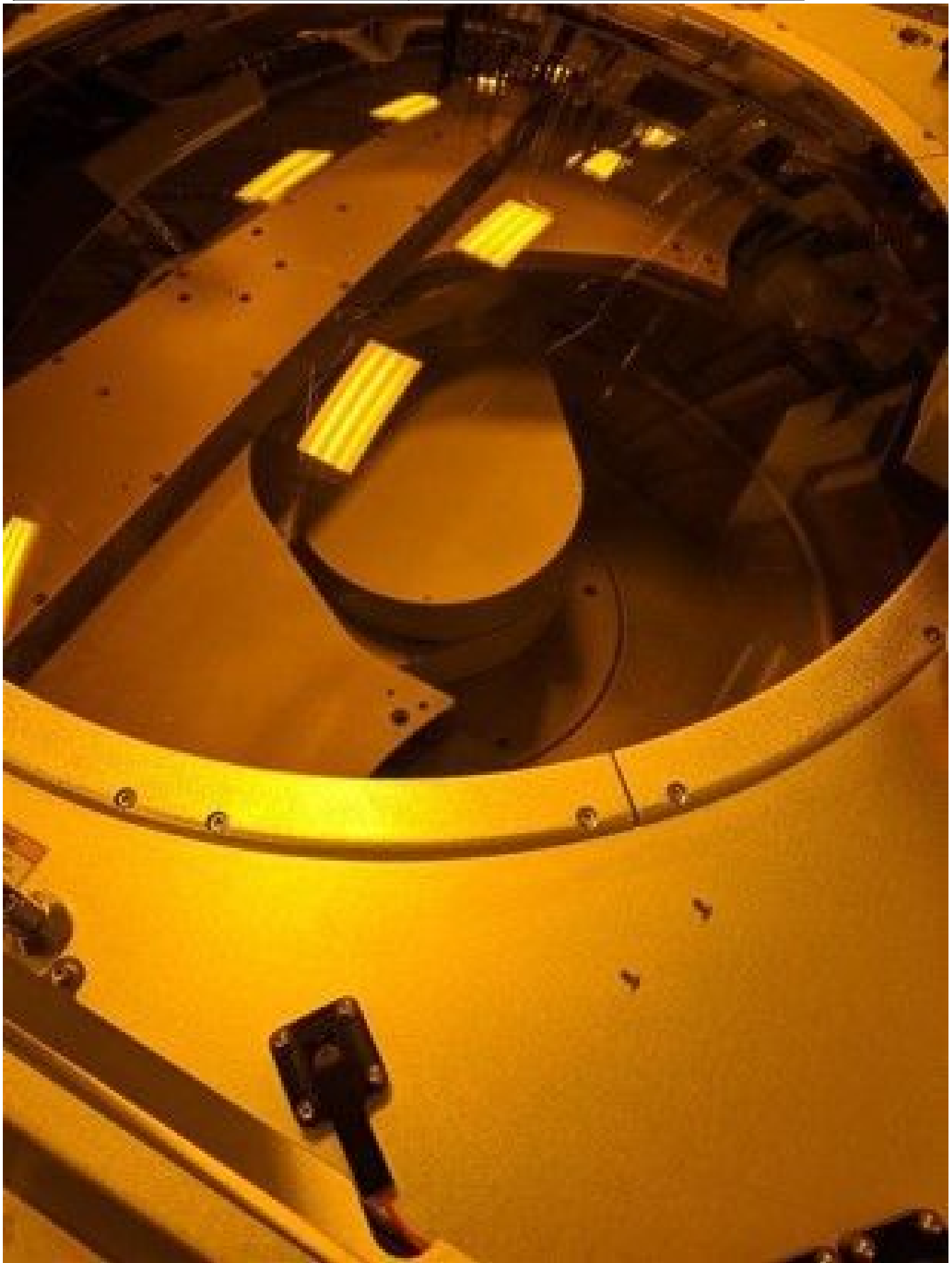
Dept#: 7810 Emp#: 113185

Location: PRODUCER GT

PRODUCER SYSTEMS, NEW YORK
221 ROUTE 9W, SUITE 200
MADE IN ITALY









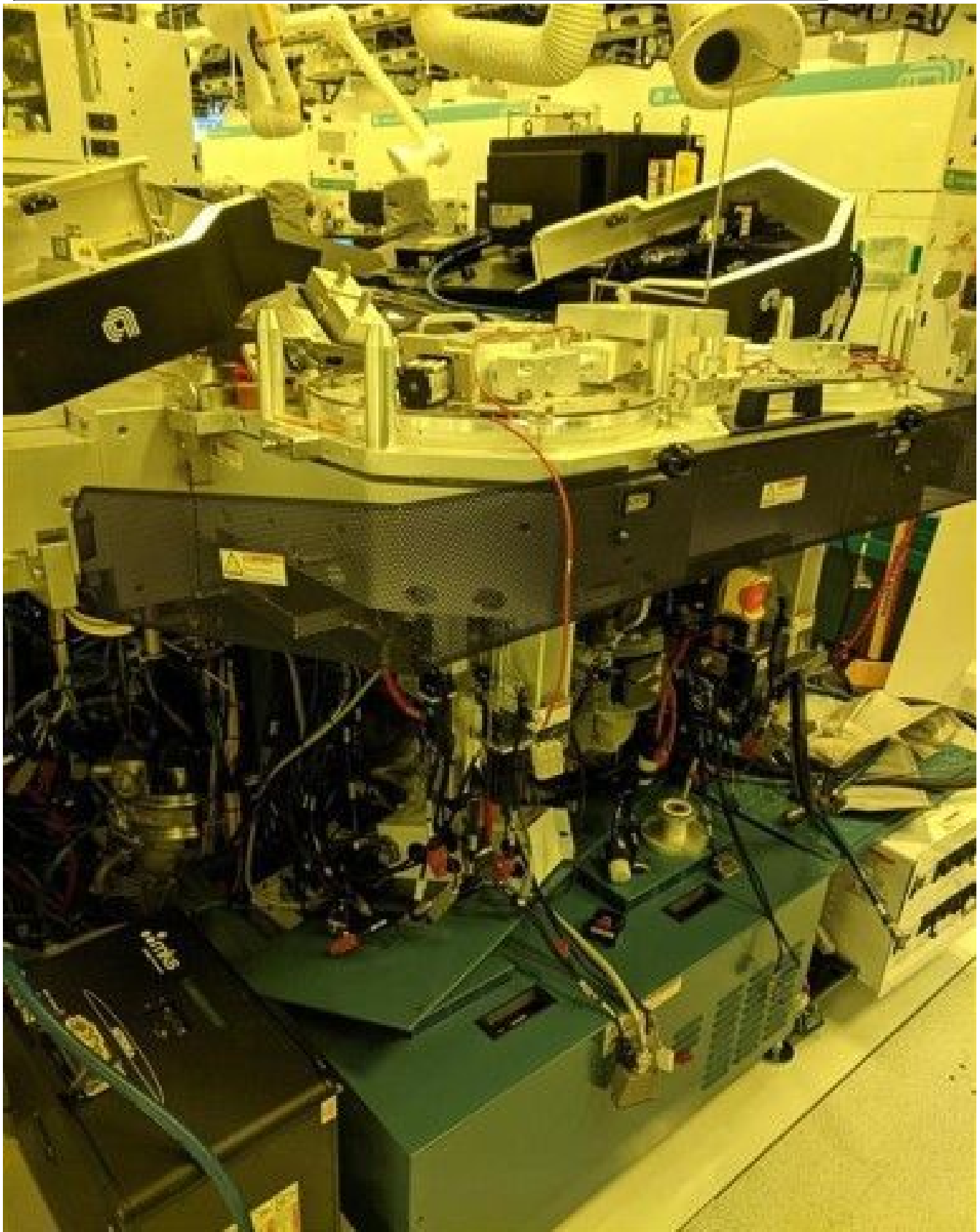


Hardware Fab

Handler System







Additional Tool Data Files