

Transaction Information

Tool ID	XIMP-A02
Tool Status	Warehouse
Location	Singapore
Wafer Size	200 mm
Fab Section	Implant
Tool Available Date	2024-11-30

General Product Information

Vendor Supplier	Applied Material
Model	Quantum Leap II
Vintage	2002
Serial No	Q720
Asset Description	Implant Quantum Leap System
Software Version	4.13-00z
CIM	Linked
Process	Low Energy Implanter

Hardware Configuration (Fab)

System Type	Description	Quantity	Status
Handler System	NA		
Factory Interface	FOUP	1	OK
Options System			
Main System	Quantum Leap Implanter	1	OK
Others			

Hardware Configuration (Subfab / Auxilliary Units)

Description	Quantity	Status
		OK
Novapure Scrubber EGS237	1	OK
Heat Exchanger	1	OK
Transfromer	1	OK

Missing/Faulty Parts / Accesories List

Description	Quantity
Part Not For Sale - Source pump A07vb	1
Part Not For Sale - Source turbo pump STP1003C	1
Part Not For Sale - Source turbo pump controller STP1003C	1
Part Not For Sale - Gas string #3 Ph3 gas	1
Part Not For Sale - Cryo compressor 9600	2
Part Not For Sale - Processor Pump AA100W	1

Description	Quantity
Part Not For Sale - Gas string #1 Boron gas	1

Tool Pictures

General	Quantum Leap
---------	--------------



General

Quantum Leap





NOTICE	注意
DO NOT COVER TRANSFORMER PERFORMANCE MAY BE AFFECTED	カバーしないで下さい。 変圧器の性能に影響が あるかも知れません。

STL[®] TRANSFORMER

TO BS 171 : 1978

RATED kVA	70	COOLING TYPE	AN
INPUT V	185-490	IMPEDANCE	3.48 %
INPUT A	218-82.5	CONN. SYMBOL	Dy11
OUTPUT V	215	TEMPERATURE CLASS	H
OUTPUT A	188	TOTAL WEIGHT	420kg
PHASE	3	SERIAL No.	B7887/9
FREQ.	50 / 60 Hz	YEAR MADE	2002

INSULATION LEVEL AC3 / AC3

INPUT: DELTA 4-WIRE OUTPUT: STAR 5-WIRE

STEWART TRANSFORMERS
LONDON NW10 7NU

AIT PART NO. 1360-90103

SCHEMATIC DIAGRAM 0170-00938

NOTICE	注意
NO STEP	乗らないで下さい。

WARNING HAZARDOUS VOLTAGES TURN OFF AND LOCKOUT POWER BEFORE REMOVING COVER		警告 高電圧 危険 カバーを外す前には必ず 電源を切り、又、電源が入らない 様な措置 (ロックアウト) を講じてください。
---	---	--

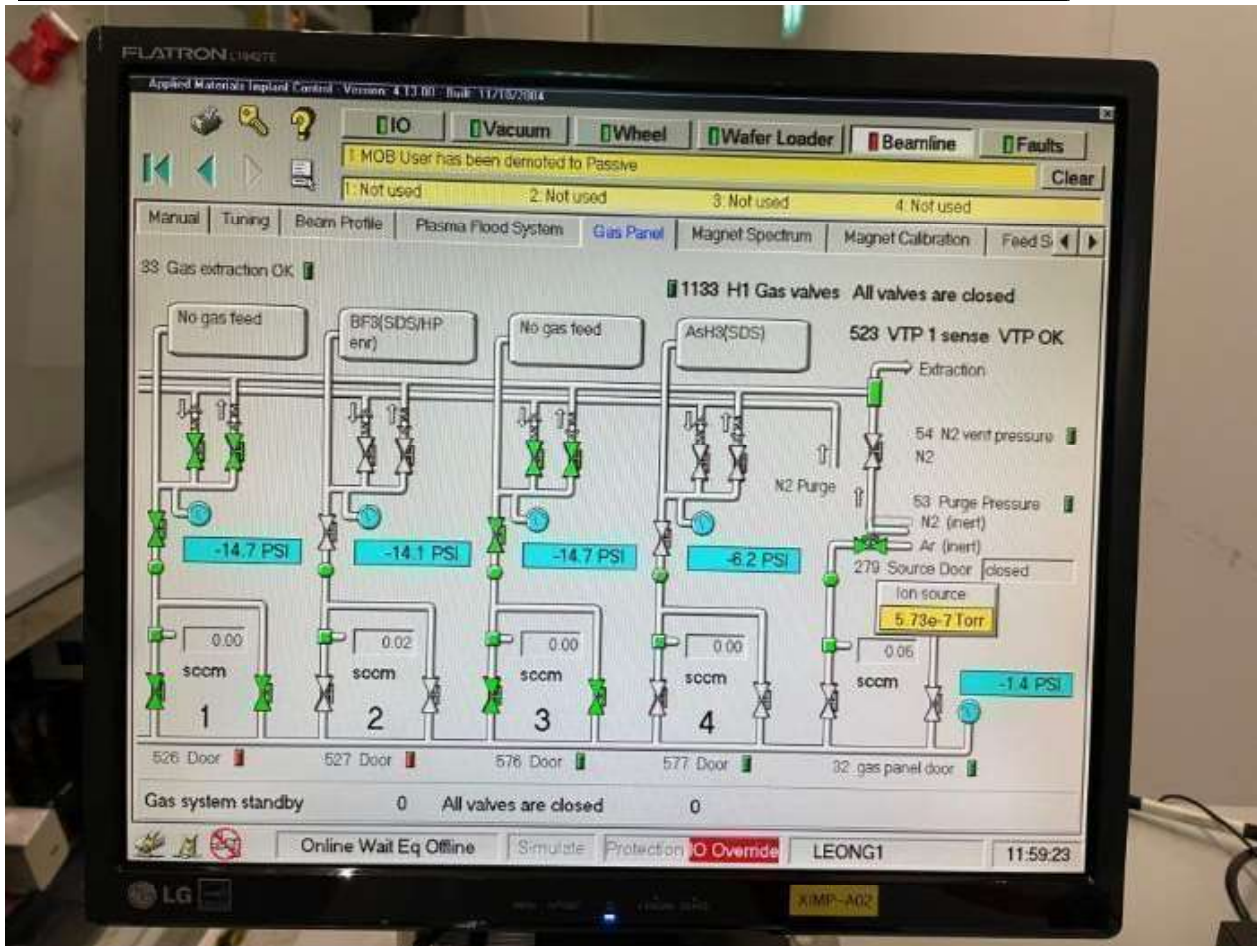
General

Quantum Leap



General

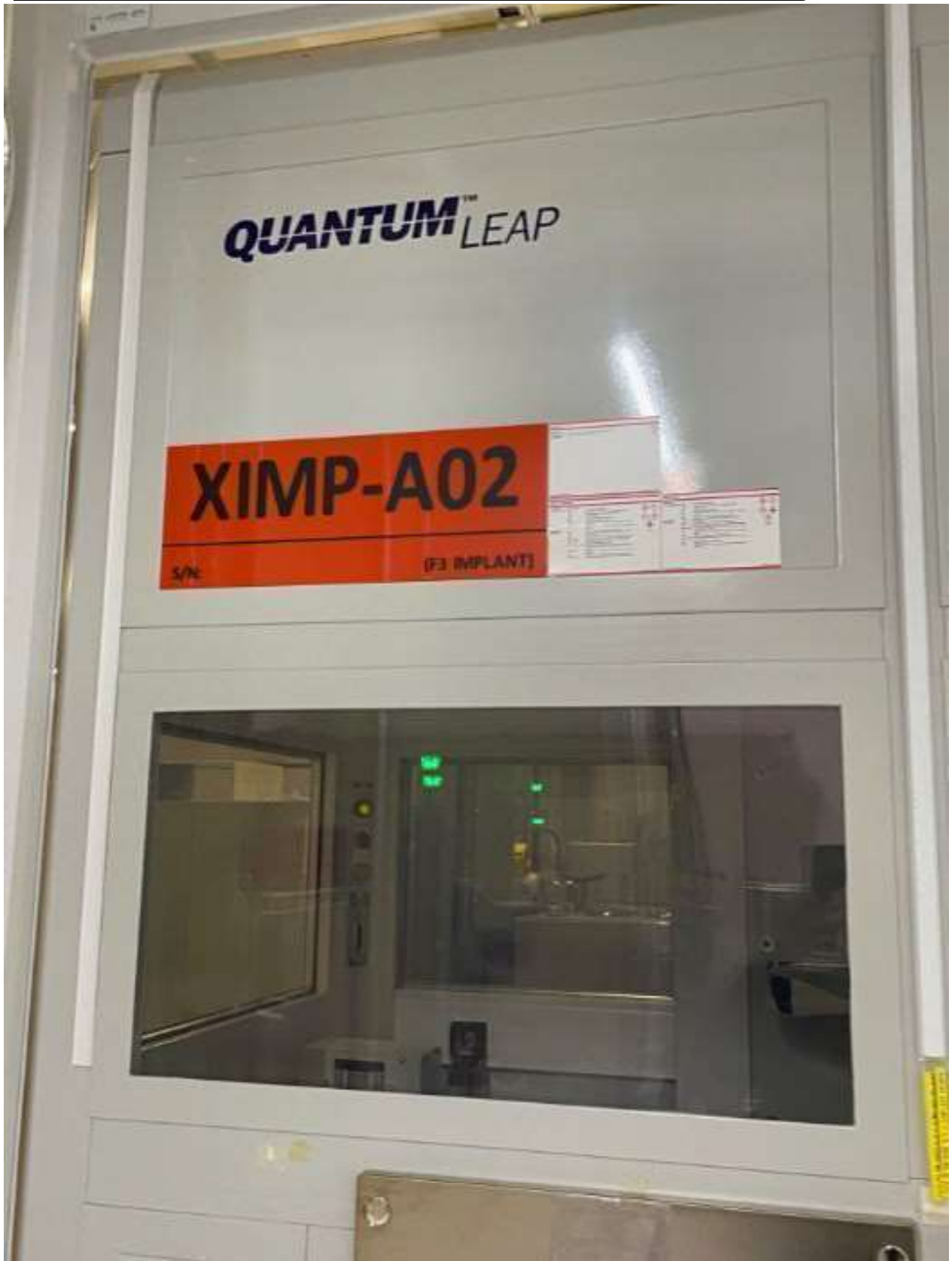
Quantum Leap

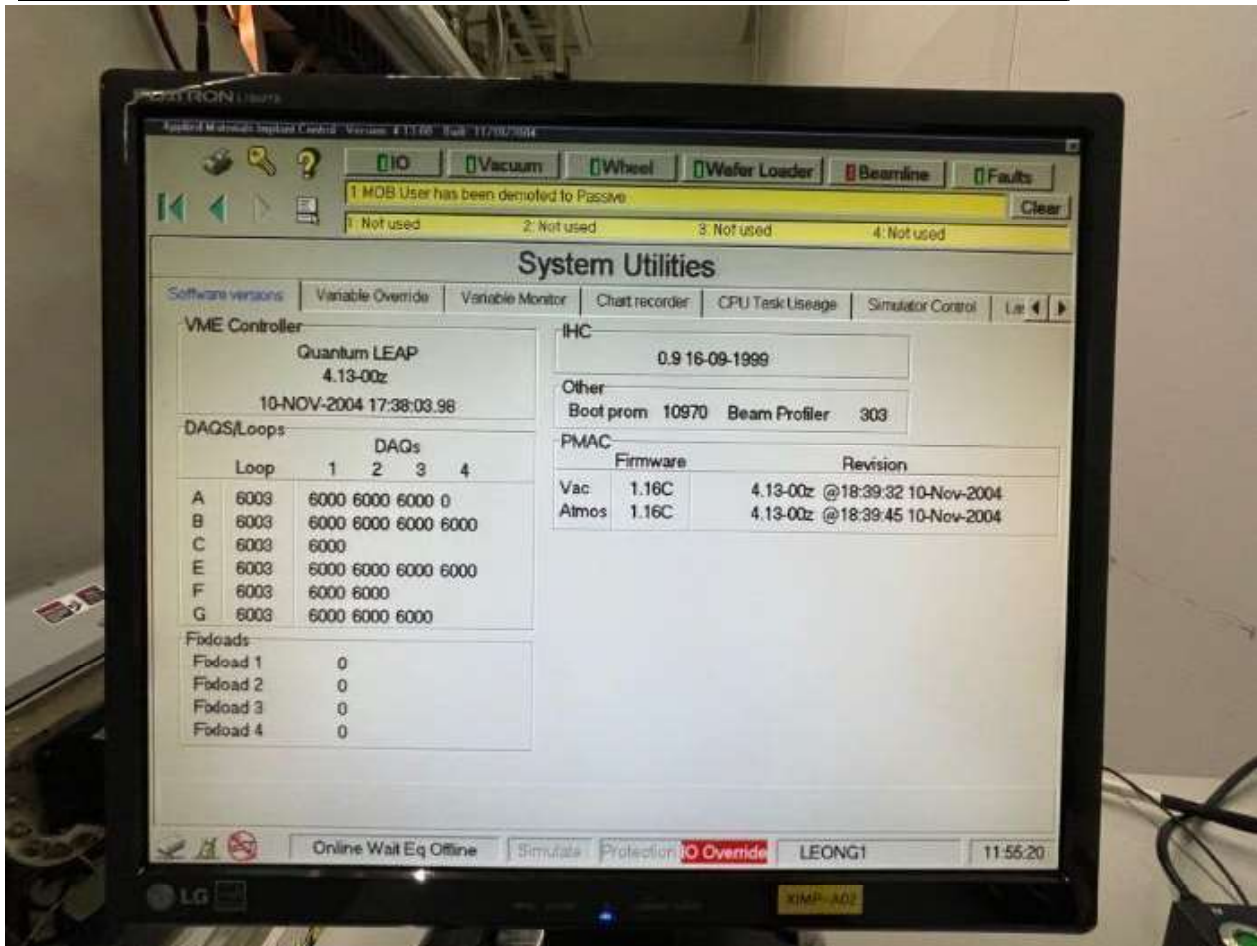


General

Quantum Leap







Manufacture Serial

Q720

CE



APPLIED IMPLANT TECHNOLOGY LTD

Foundry Lane, Horsham.
West Sussex RH13 5PY,
England

MODEL No.
SERIAL NO.

QUANTUM

Q

DATE OF MANUFACTURE

PRIMARY POWER SCHEMATIC

Power Requirements

Voltage	208 /120 Volt
Wiring Configuration	3 Phase + Neutral + Earth
Frequency	50/60Hz
Max con power	65kVA
Full Load	160 Amp
OCP Circuit breaker Rating	250 Amp
Single largest load	90A (Beamline Iso Tx)
Interrupt capacity	65000 Amps

Overcurrent protection provided at machine supply terminals

Missing Parts

Details refer to missing / faulty parts list



Missing Parts

Details refer to missing / faulty parts list



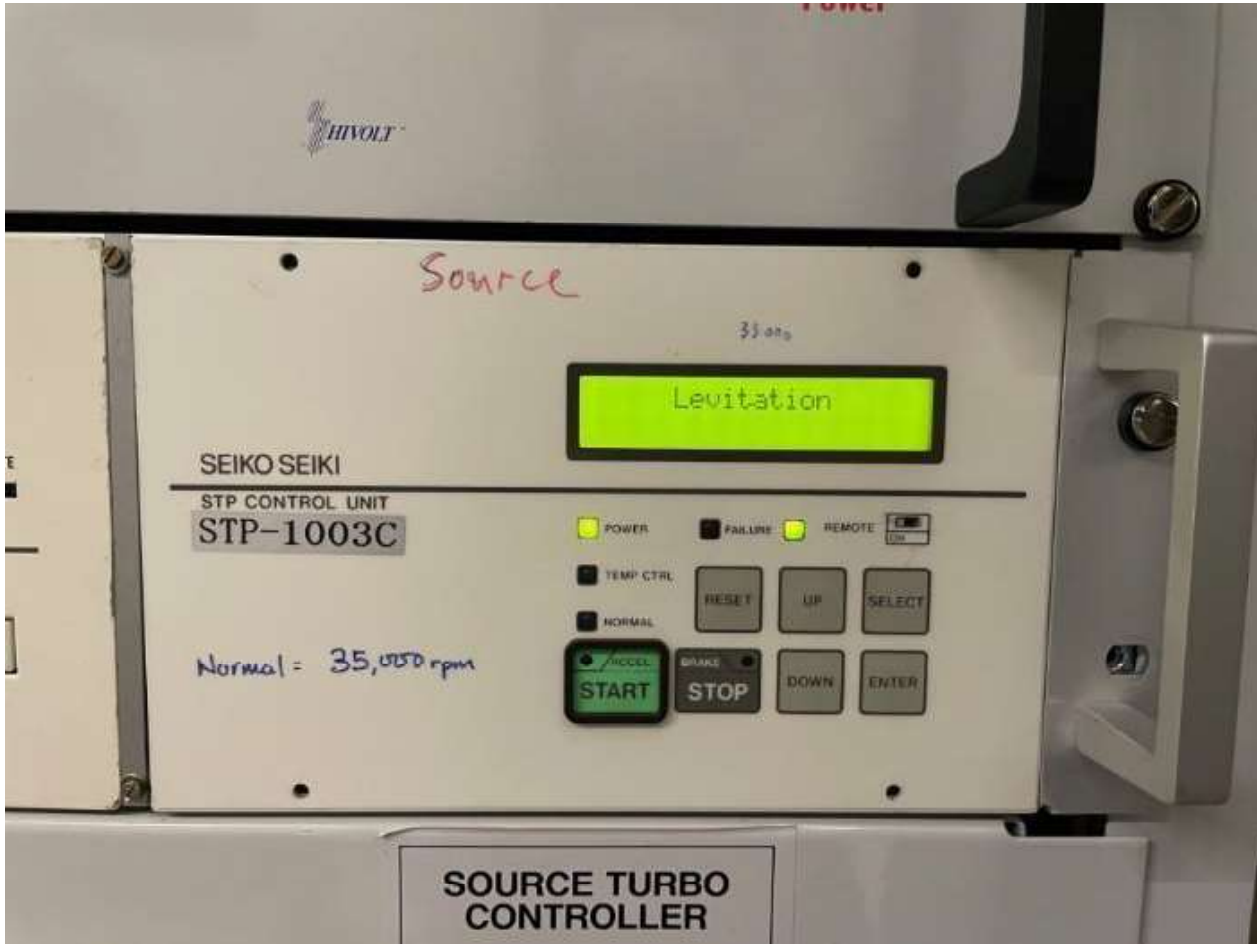
Missing Parts

Details refer to missing / faulty parts list



Missing Parts

Details refer to missing / faulty parts list



Missing Parts

Details refer to missing / faulty parts list



Missing Parts

Details refer to missing / faulty parts list

