

Transaction Information

Tool ID	67R71V
Tool Status	Connected
Location	Burlington, USA
Wafer Size	200 mm
Fab Section	Etch
Tool Available Date	2025-01-15

General Product Information

Vendor Supplier	Applied Materials
Model	200mm Centura II IPS, Etch
Vintage	1999
Serial No	AMAT18-01 (EM19)
Asset Description	AMAT Centura II IPS Etch Tool
Software Version	E4.8_26
CIM	SECS
Process	ZX Etch

Hardware Configuration (Fab)

System Type	Description	Quantity	Status
Main System	VME Controller/PDU	1	OK
Main System	Analog Gas Panel	1	OK
Handler System	Tilt-out Cassettes	2	OK
Factory Interface	Open Cassette	2	OK
Others			
Main System	IPS Chambers	3	OK
Main System	Centura II Etch Mainframe, 3 IPS Chambers (A/B/C), VME Controller, Analog Gas Panel	1	OK
Options System	Endpoint	1	OK
Handler System	Wafer Orienters	2	OK
Handler System	HP Robot	1	OK

Hardware Configuration (Subfab / Auxilliary Units)

Description	Quantity	Status
Heat Exchangers/ Chillers	2	OK
Generator Racks	3	OK

Missing/Faulty Parts / Accesories List

Description	Quantity
NONE	

Tool Pictures

General

Misc.



General

Misc.



General

Misc.



General

Misc.



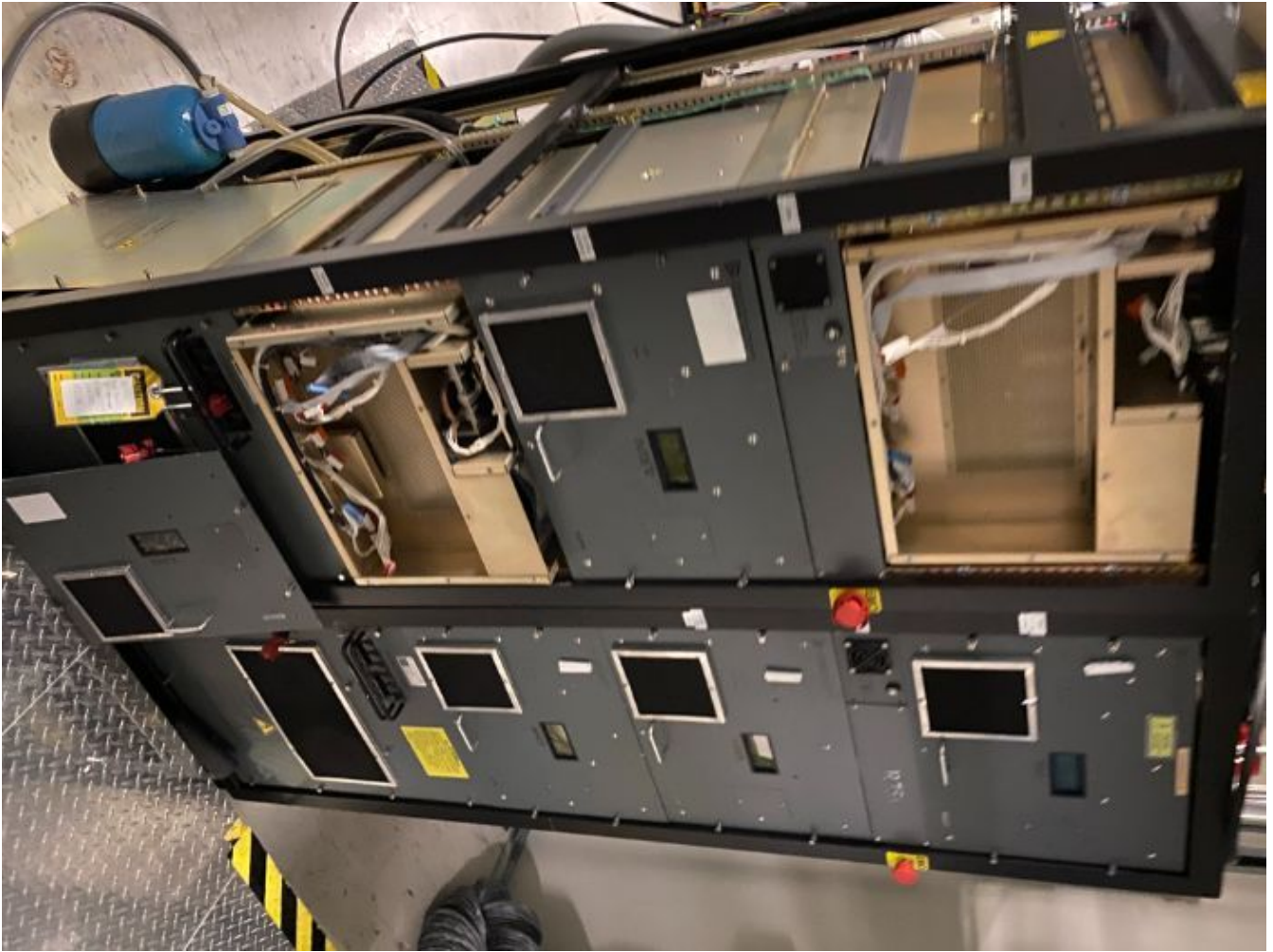
General

Misc.



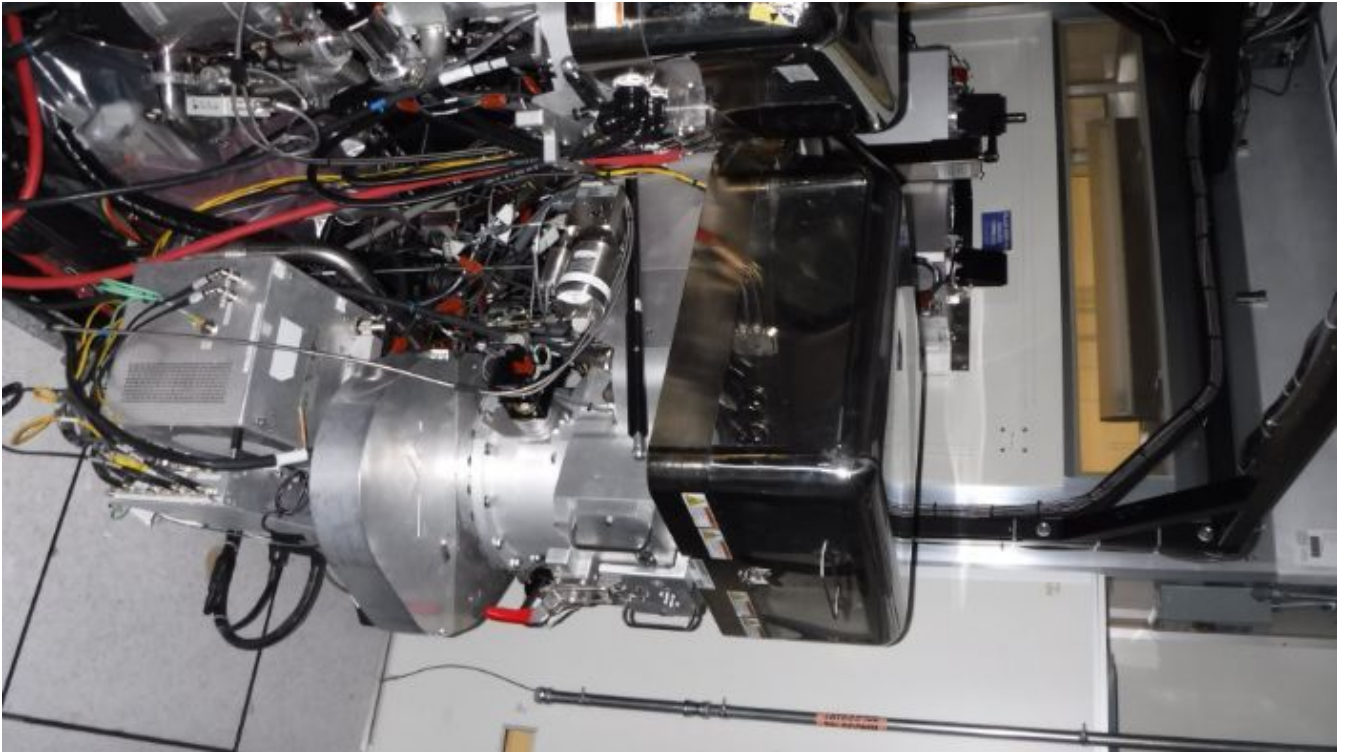
General

Misc.



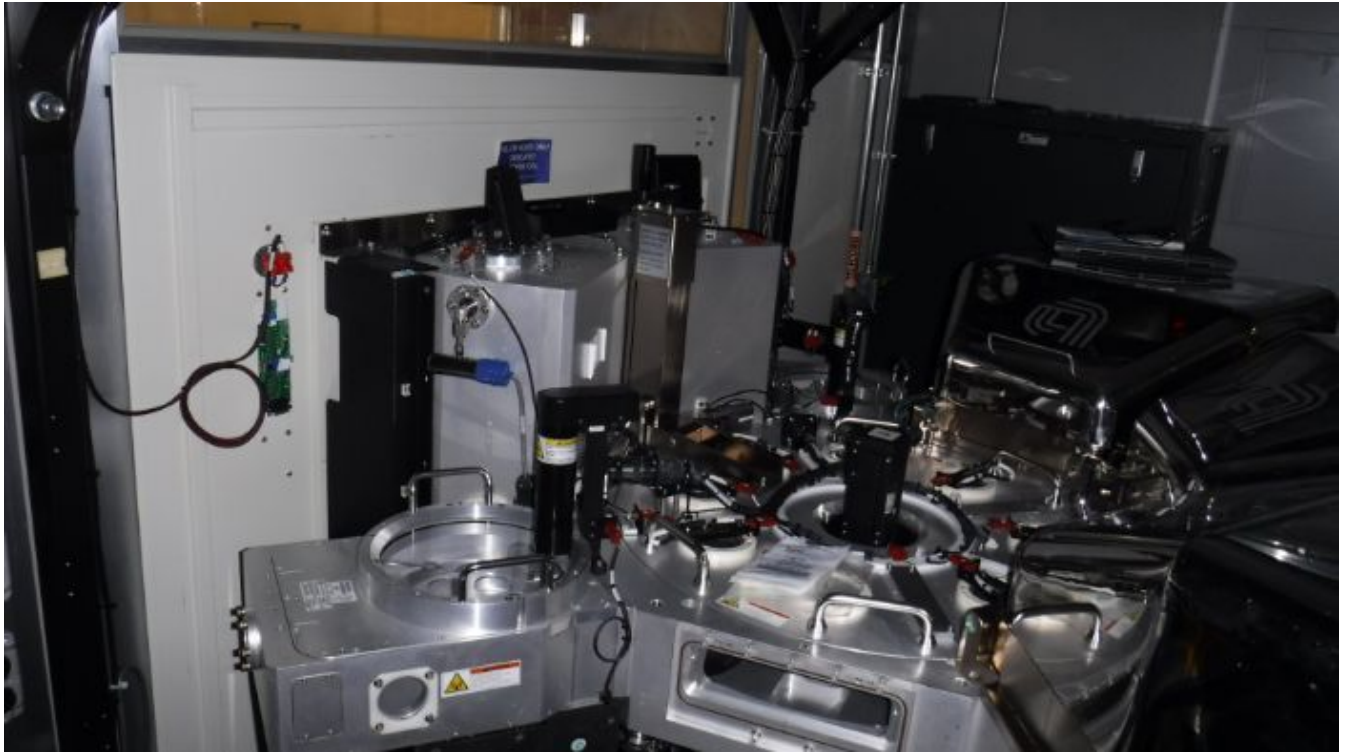
General

Misc.



General

Misc.



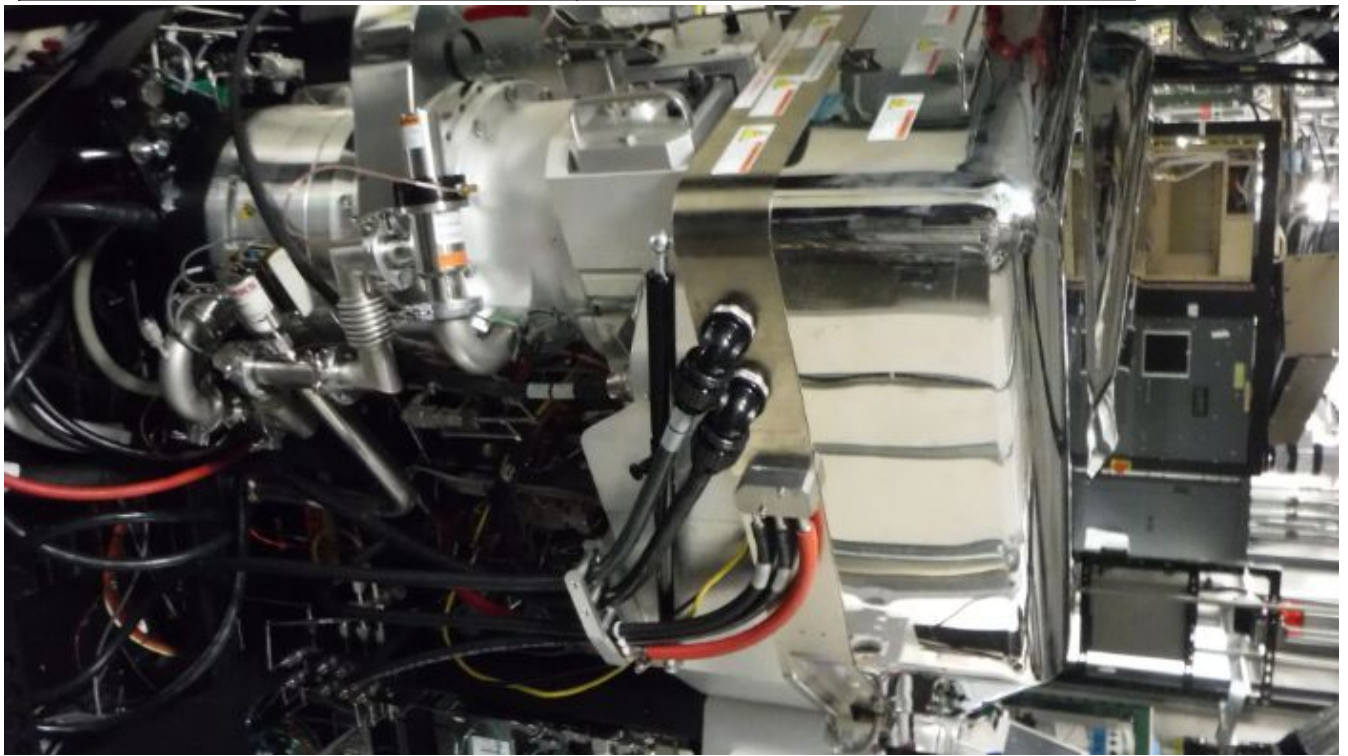
General

Misc.



General

Misc.



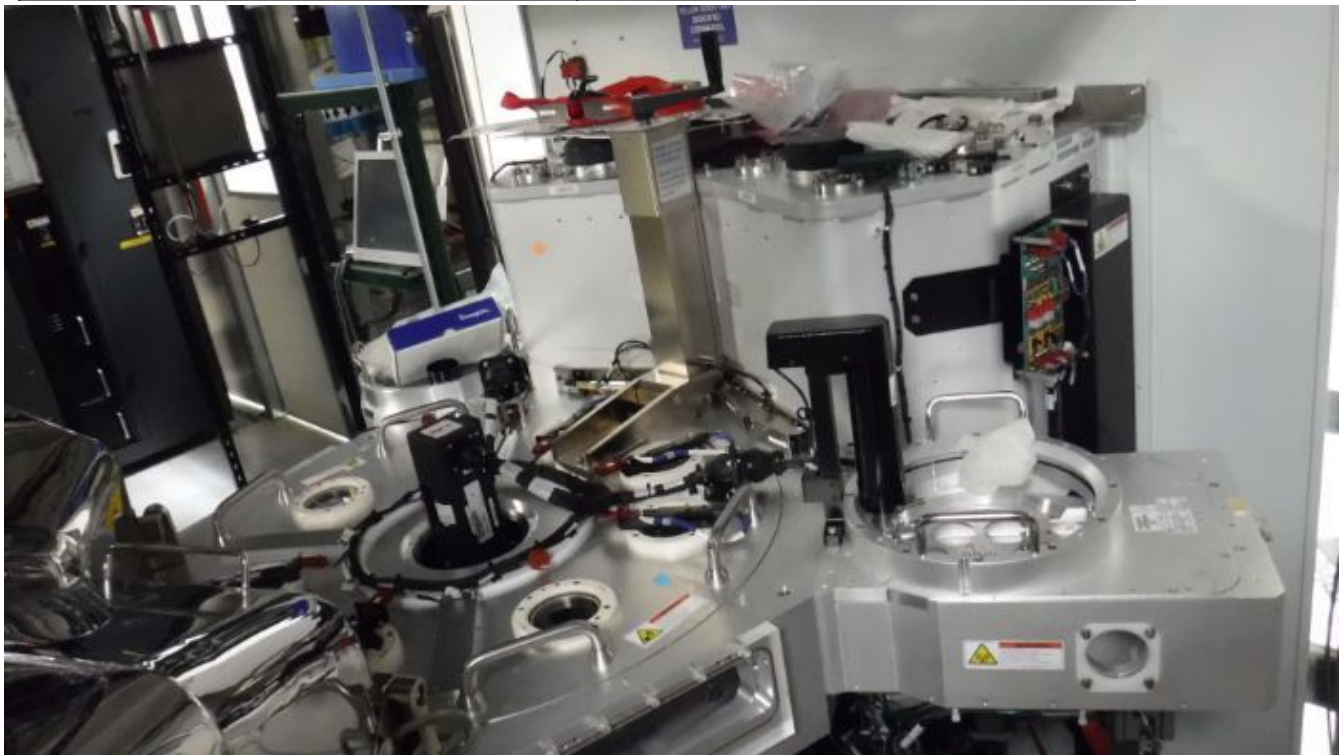
General

Misc.



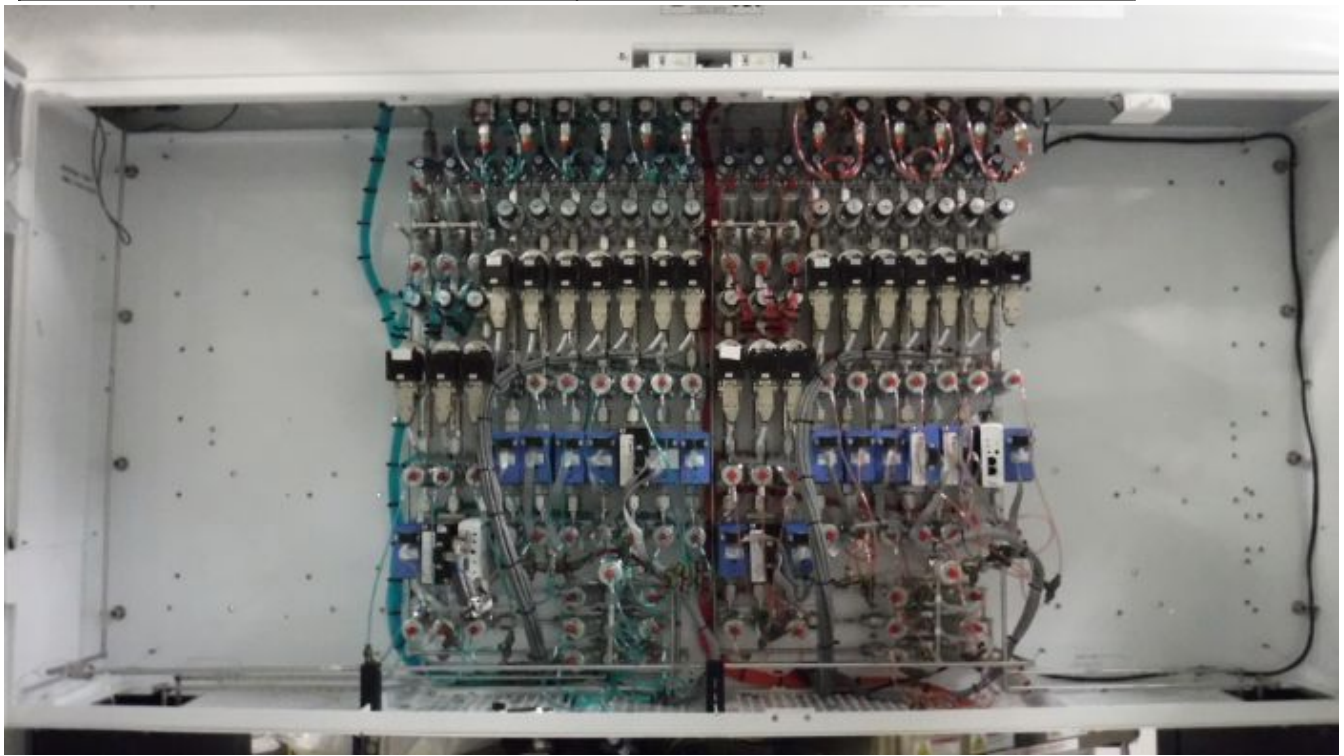
General

Misc.



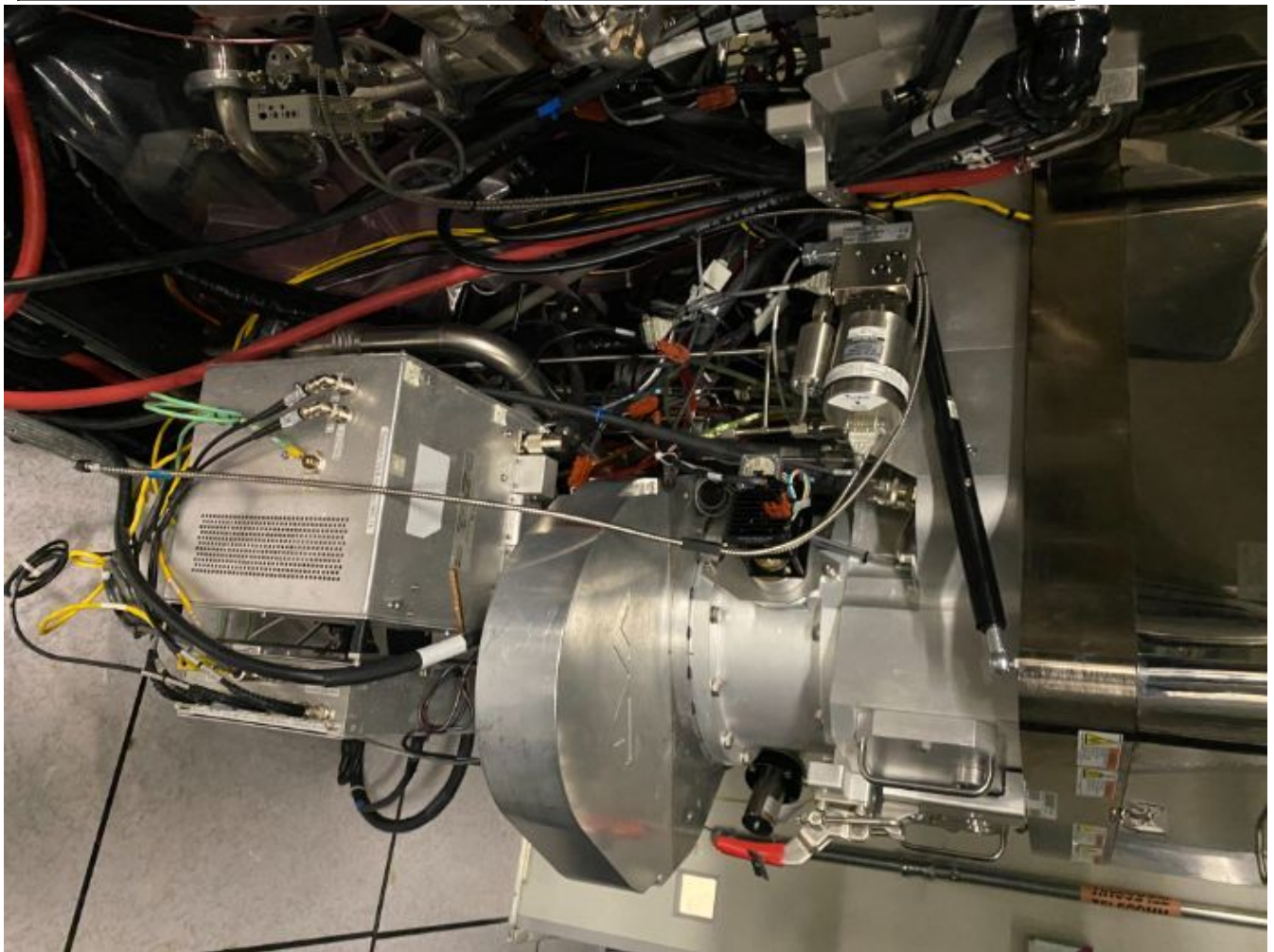
General

Misc.



General

Misc.



General

Misc.



General

Misc.



General

Misc.



Hardware Sub-fab

Generator Racks, Heat Exchanger/
Chillers



Hardware Sub-fab

Generator Racks, Heat Exchanger/
Chillers



Hardware Sub-fab

Generator Racks, Heat Exchanger/
Chillers



Manufacture Serial

AMAT18-01 (EM19)



APPLIED MATERIALS •

OVERCURRENT PROTECTION PROVIDED
AT MACHINE SUPPLY TERMINALS.

MODEL:

200mm CENTURA II IPS PRIMARY A/C CH A-B

AMAT P.N.

0010-01521

SERIAL NO:

AMAT18-01

C-H P.N.

1B04130601 REV #4

VOLTAGE:

208^v

#WIRES:

FOUR

PHASE:

3 ϕ Δ

FULL-LOAD CURRENT:

320A

FREQ:

50/60

MAXIMUM SYSTEM RATING:

143 KVA

AMPERE RATING OF LARGEST LOAD:

100A

INTERRUPTING CURRENT:

65 KA

AMPS I.C.

YEAR OF CONSTRUCTION:

SEPT/99

DIAGRAM NUMBER:

1B04133 REV #10

MFG: CUTLER-HAMMER FAYETTEVILLE, NC

4740 CORPORATION DRIVE

A PHASE RED

B PHASE BLUE

Additional Tool Data Files